


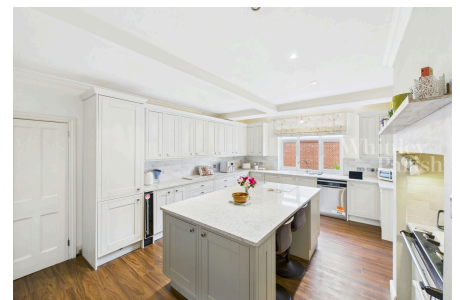


## Wacton Road, Forncett St Peter

£1,250,000

 7  3  3



The property is believed to have origins back to the 1500s in parts and has been latter extended in the Georgian and Victorian eras, now comprising a fine and impressive country residence. Within the last couple of years, the house has been significantly enhanced and upgraded under the meticulous care of the current owners. Throughout, the property is impeccably presented, showcasing a superb decorative order with well laid-out accommodation and generously proportioned rooms. Over the years careful attention has been given to preserving the character of this period property with enhancements designed to complement its heritage.



## Key Features

- Grounds extending to 1.6 acres
- Significantly enhanced & extended
- Tucked away, secluded rural position
- Freehold
- Council Tax Band G
- Approx 6,300 sq ft
- Outbuildings including garaging & garden house
- Immense character & charm
- EPC Rating E
- Oil heating - Private drainage

