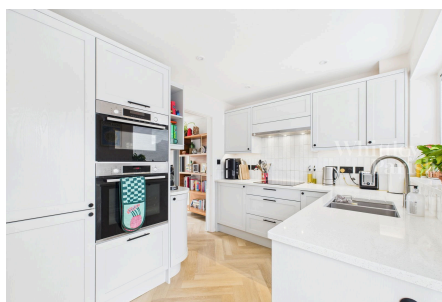


## Rectory Close, Long Stratton, Norwich, NR15 2TU

Guide Price £275,000-£285,000

3 1 1



This three bedroom detached house has undergone an extensive renovation and is located at the end of a cul-de-sac. The accommodation is presented in a most immaculate condition with the ground floor featuring a lounge/diner complemented by a conservatory that enjoys views over the substantial rear garden. The bespoke kitchen has been thoughtfully designed and is equipped with Bosch integrated appliances. Upstairs there are three well-appointed bedrooms and a refitted family bathroom, finished to a high standard. Externally there is excellent driveway parking to the front leading to a single garage and upon entering the rear garden this property really comes into its own. Occupying a generous plot, this substantial garden offers an exceptional level of peace and privacy, ideal for relaxation or entertaining.

## Key Features

- Price guide £275,000 to £285,000
- Cul-de-sac location
- Refitted kitchen
- Replacement flooring throughout
- Close to public transport links
- Rear garden 50m x 20m
- Ample driveway parking and garage
- Refitted bathroom
- Walking distance to local schools
- Heating - oil ch, Drainage - mains

