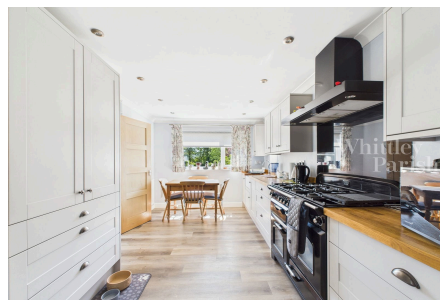


Rectory Road, Tivetshall St Mary

Guide Price £500,000

4 3 2



Beautifully set in the rural countryside upon a 0.51 acre plot with southerly facing rear gardens boasting rural views beyond. Comprising a four bedroom detached bungalow built of traditional brick and block construction under an interlocking tiled roof with the benefit of upvc double glazed windows and doors. Offering bright and spacious accommodation throughout all totalling in the region of 1,450 sq ft. Set back from the road and approached via a shingle driveway giving off-road parking for multiple vehicles leading to a single garage. The main gardens are found to the rear enjoying a southerly aspect being predominantly laid to lawn with a variety of trees, plants and shrubs giving colour during the summer months, two garden sheds and having beautiful rural views beyond.

Key Features

- Southerly facing gardens
- Single garage
- 0.51 acre plot
- Freehold - EPC Rating E
- LPG heating
- Rural location
- Field views
- Approx 1,450 sq ft
- Council Tax Band D
- Mains drainage

