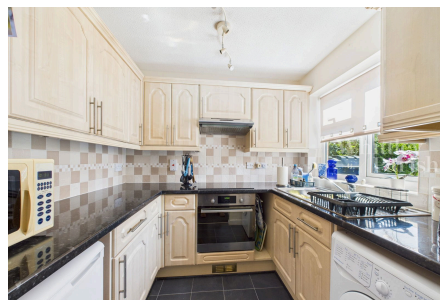


## Woodland Rise, Tasburgh

Guide Price £190,000-£200,000

🛏 2 🚿 1 🚗 1



The property comprises a two bedroom mid-terrace house built of traditional brick and block cavity wall construction under an interlocking tiled roof with upvc double glazed windows and doors, whilst being heated by an oil fired boiler via radiators. Offering bright and spacious accommodation totalling over 500 sq ft, consisting of entrance hall leading to kitchen and living room at ground floor, whilst a landing gives access to two bedrooms and a bathroom at first floor level, an attic room can be accessed from bedroom one. Set back from the road with low maintenance front garden. The main garden is found to the rear being predominantly laid to lawn with a shingle area and a variety of plants and shrubs, all being enclosed by panel fencing. An en bloc single garage is found to the north of the property.



## Key Features

- GUIDE PRICE £190,000-£200,000
- Single en bloc garage
- Enclosed garden
- Attic room
- Bus routes to Norwich
- Sought after village
- Freehold
- EPC Rating D - Council Tax Band B
- Oil heating
- Mains drainage

