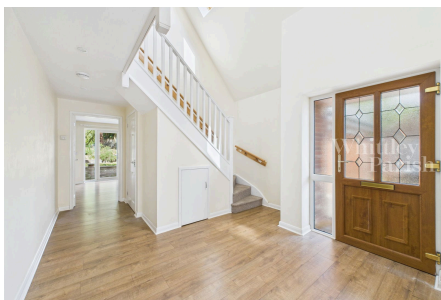


Olive Avenue, Newton Flotman - Freehold - EPC rating B

Guide Price £400,000 to £425,00

🛏 4 🚿 2 🛋 1



Boasting multiple dual aspect rooms giving bright and spacious accommodation, in the regions of 2,000 sq ft, this four bedroom detached house is less than 10 years old benefitting from double bedrooms, a double garage and no onward chain. Set upon an elevated position and approached via a tarmac driveway giving off-road parking for multiple vehicles leading to a large double garage, lawn area to front secluded by hedging.

Key Features

- Guide Price £400,000 - £425,000
- No onward chain
- Double garage
- Four double bedrooms
- Dual aspect rooms
- Less than 10 years old
- Freehold - EPC rating B
- Council Tax Band E
- Gas heating
- Mains drainage

