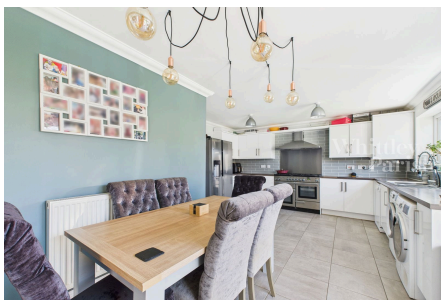


Sterlet Grove, Mulbarton, Norwich, NR14 8FS

Guide Price £550,000 to £575,000

4 bedrooms 2 bathrooms 3 cars



Built in 2017 and finished to a high standard, this beautifully presented executive-style detached home offers generous and flexible living accommodation, perfect for modern family life. Located in a desirable cul-de-sac setting overlooking a green park area, this property combines privacy, convenience, and lifestyle in equal measures. The spacious ground floor features a large open plan kitchen/diner with double doors opening onto a decked area and the sunny, fully enclosed rear garden beyond. The kitchen boasts ample workspace and modern fittings with plenty of room for a large dining table, ideal for entertaining.. The bright and welcoming living room also benefits from double doors to the decked terrace, where external electrics are in place to accommodate a hot tub (available by separate negotiation).

Key Features

- GUIDE PRICE £550,000 to £575,000
- 4 x double bedrooms
- Main bedroom with 4 piece en-suite
- Overlooking park area
- Large enclosed rear garden
- Solar panels & 5kw battery
- Ground floor 5th bedroom or study
- Cul-de-sac location
- Garage and driveway parking
- EV charger

