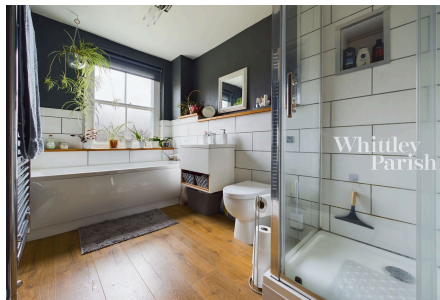
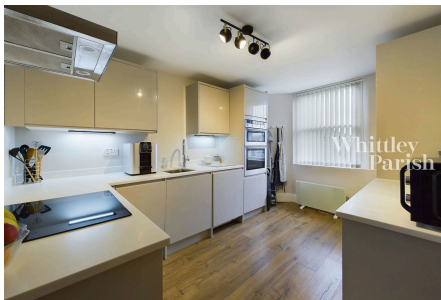


Ipswich Road, Pulham Market, IP21 4YJ

£140,000-£150,000

2 1 1



This delightful first floor apartment offers stunning accommodation having been significantly updated and refurbished in recent years. Improvements include new secondary glazing, replacement kitchen and bathroom, the installation of electric heaters and pressurised hot water cylinder and redecoration throughout. Presented in an immaculate condition the property will appeal to first time buyers and investors alike. Being a leasehold property there are obligations towards a ground rent and service charge. The ground rent is currently £50 per annum with the service charge is £125 pcm. The agent has also been advised approximately 163 years remain on the lease.

Key Features

- GUIDE PRICE £140,000-£150,000
- No onward chain
- New secondary double glazing
- Fully redecorated throughout
- Field views
- Communal parking and gardens
- Leasehold
- Drainage - private
- Heating -electric
- Council Tax Band A - EPC Rating F

