

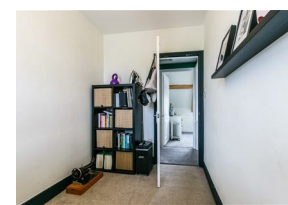


Alexander Hudson Estates

Sales Particulars

Alexander Hudson Estates

Bamford Terrace, Palmersville, NE12



The Property

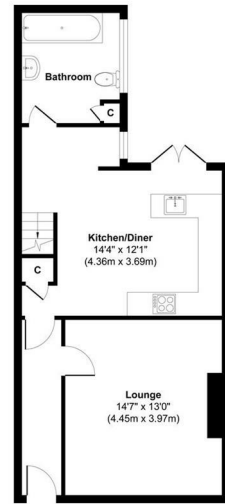
Alexander Hudson Estates introduces to the market this three bedroom, mid-terrace home situated in the popular residential area of Forest Hall, NE12.

The property features an entrance hallway, living room, modern kitchen-diner and modern bathroom. Three bedrooms occupy the first floor. A south facing, low maintenance yard with decking, sits to the rear.

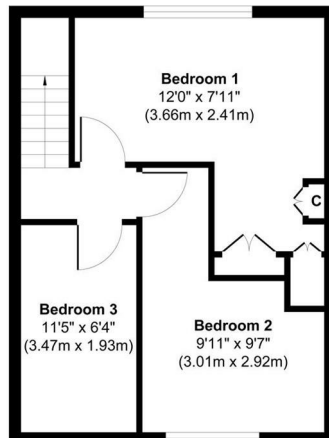
The property is ideally located and within walking distance to Forest Hall High Street which offers a range of amenities. The Killingworth Shopping Centre, White Swan Centre and The Lakeside Centre are all close-by along with both Killingworth Boating Lake with its bridleways and Lakeside Park offering idyllic settings.

Rising Sun Country Park is only a 5-minute drive, offering great outdoor walks. The A19 is a few minutes' drive, offering easy access to Northumberland, and both Silverlink and Cobalt Business Parks. Great Lime Road also offers a straight 5-10 minute drive through to Quorum, Balliol and Gosforth Business Parks.

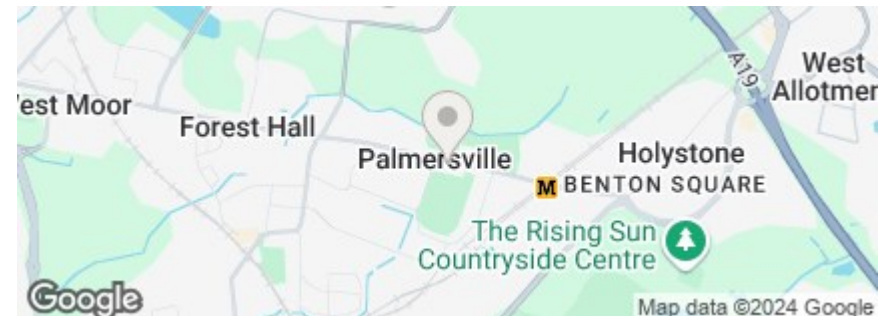
Freehold
Council Tax: A
EPC Rating: 60



Ground Floor
Approximate Floor Area
556 sq. ft.
(51.69 sq. m)
Approx. Gross Internal Floor Area 934 sq. ft / 86.87 sq. m
Illustration for identification purpose only, measurements approximate and not to scale, unauthorised reproduction is prohibited. All rights reserved for Alexander Hudson Estates



First Floor
Approximate Floor Area
378 sq. ft.
(35.18 sq. m)
Approx. Gross Internal Floor Area 934 sq. ft / 86.87 sq. m
Illustration for identification purpose only, measurements approximate and not to scale, unauthorised reproduction is prohibited. All rights reserved for Alexander Hudson Estates





Alexander Hudson Estates
The Printworks
20 Arrow Close
NE12 6QN

0191 268 7433
sales@alexanderhudson.co.uk