



# Alexander Hudson Estates

---

Sales Particulars

# Alexander Hudson Estates

Meadow Gardens, Cygnet Park, NE12





# The Property

Alexander Hudson Estates are delighted to welcome to the market this immaculately presented two-bedroom terraced home. Set on a quiet cul-de-sac within the increasingly popular Cygnet Park development in Killingworth, it sits close to local schools, a supermarket, restaurants, parks, and scenic bridleways.

The ground floor offers bright, spacious open-plan living and comprises an entrance hallway, a generously sized cloakroom/WC, a fully integrated kitchen-diner, and a living room with bi-fold doors opening out to the large rear garden.

Upstairs, you'll find two double bedroom, one featuring custom built-in wardrobe as well as a modern family bathroom with shower.

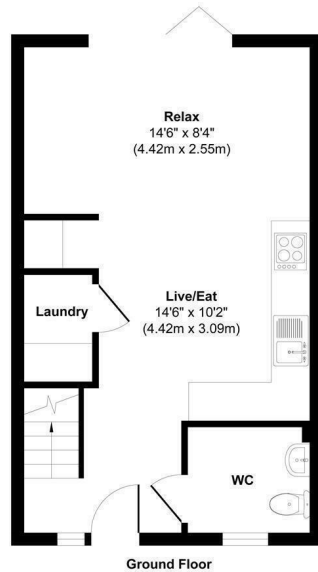
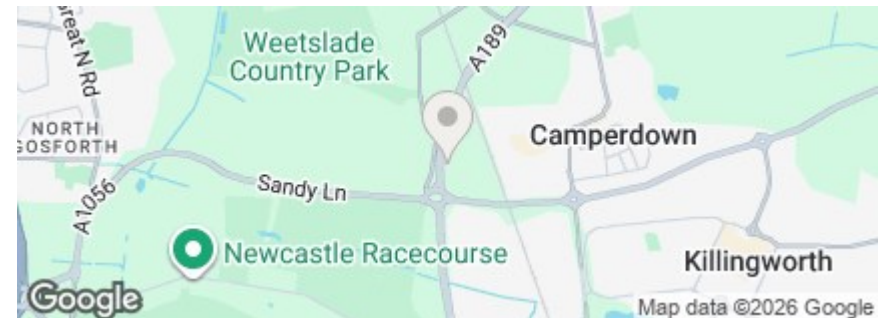
Externally, the property benefits from a driveway providing off-street parking to the front, while the rear boasts a private, well-maintained garden with patio areas ideal for relaxing or entertaining.

The property is close to The Killingworth Shopping Centre and Weetslade Country Park, making it great for local amenities and walks.

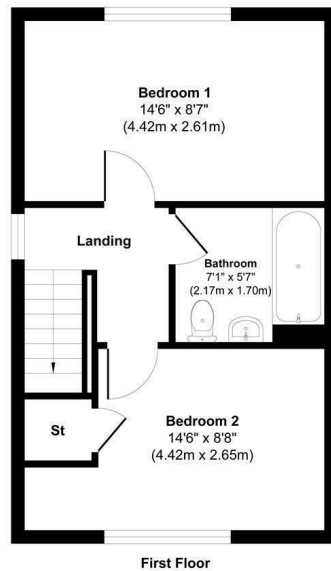
Killingworth has evolved from its mining heritage into a modern, thriving town. The area offers a wide range of amenities, centred around the White Swan Shopping Centre with supermarkets, local shops, welcoming pubs, and restaurants. Outdoor spaces include Killingworth Boating Lake, local bridlepaths, and nearby nature reserves, providing excellent opportunities for leisure and recreation. Transport links are strong, with bus services to Newcastle and surrounding areas and easy access to the A19 for commuters. Families are well served by schools including George Stephenson High School and several local primary schools, making Killingworth & Killingworth Village a vibrant, convenient, and family-friendly location.

#Killingworth #NE12P #LocalAmenities #WhiteSwanCentre #OutdoorSpaces #KillingworthLake #CommunityVibes #ModernLiving

Freehold  
Council Tax: B  
EPC Rating: 84



Approx. Gross Internal Floor Area 363 sq. ft / 33.70 sq. m  
Illustration for identification purpose only, measurements approximate and not to scale, unauthorized reproduction is prohibited. All rights reserved for Alexander Hudson Estates



Approx. Gross Internal Floor Area 363 sq. ft / 33.70 sq. m  
Illustration for identification purpose only, measurements approximate and not to scale, unauthorized reproduction is prohibited. All rights reserved for Alexander Hudson Estates



---

Alexander Hudson Estates  
The Printworks  
20 Arrow Close  
NE12 6QN

0191 268 7433  
[sales@alexanderhudson.co.uk](mailto:sales@alexanderhudson.co.uk)