

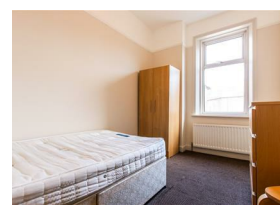
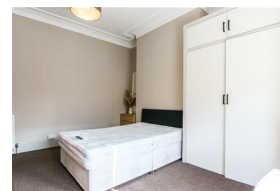
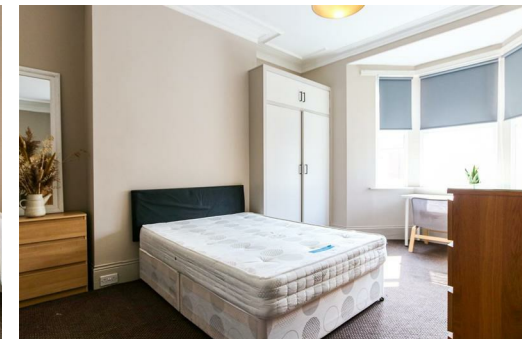


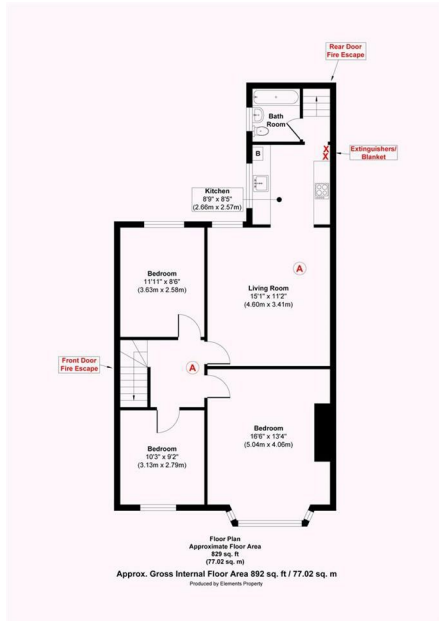
Alexander Hudson Estates

Sales Particulars

Alexander Hudson Estates

Ashleigh Grove, West Jesmond, NE2





The Property

Available immediately - Alexander Hudson Estates welcome to the market, this well presented, three bedroom, first floor apartment with private rear yard in the thriving suburb of West Jesmond, NE2.

The property itself has recently been redecorated throughout and is offered to the market fully furnished and available Immediately.

Jesmond is one of Newcastle's most sought-after suburbs, combining period charm, leafy streets, and a vibrant social scene. Just a mile from the city centre, it offers excellent transport links, top local amenities, and a lively mix of cafés, restaurants, and independent shops. The area is popular with professionals, families, and students, creating a diverse and dynamic community.

Green spaces like Jesmond Dene provide peaceful escapes, while Osborne Road offers a bustling hub of bars and dining. With attractive Victorian homes and strong rental and resale demand, Jesmond is an ideal location for both homeowners and investors.

#JesmondLiving #WestJesmond #NewcastleProperty #NE2
#JesmondRental #AlexanderHudsonEstates #ToLetNewcastle
#PropertyToLet #FirstFloorFlat

Council Tax: B
EPC Rating: 68





Alexander Hudson Estates
The Printworks
20 Arrow Close
NE12 6QN

0191 268 7433
sales@alexanderhudson.co.uk