

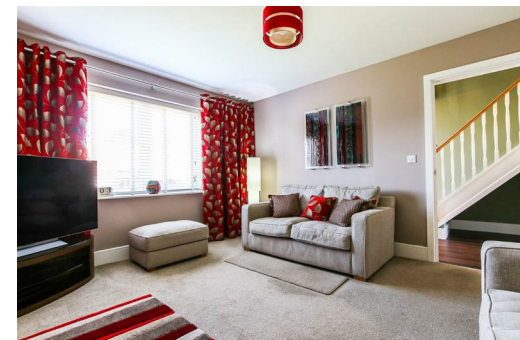


Alexander Hudson Estates

Sales Particulars

Alexander Hudson Estates

Coppice Place, Forest Gate, NE12



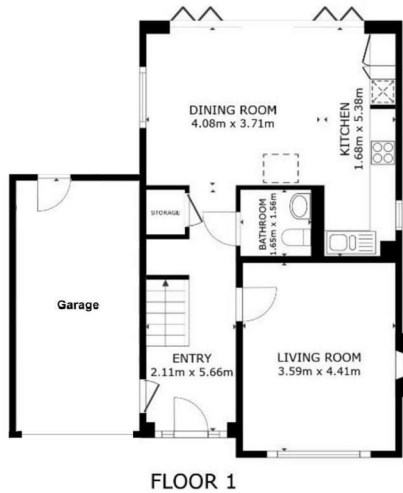
The Property

Alexander Hudson Estates introduces to market this stunning four-bedroom detached family home with a garage and spacious rear garden in the popular residential area of Forest Gate, NE12. Close-by to a range of local amenities, transport links and schooling. Beautifully presented throughout, comprising of an entrance hallway, open-plan living, dining and kitchen area with WC.

On the first floor lies four spacious bedrooms with an ensuite attached to the main bedroom and a family bathroom. To the front is a large driveway whilst at the rear is a fully encompassed, landscaped garden with a well maintained pond.

The property lies just a 5-minute drive (or 15-minute walk) from a large Asda supermarket, and is a similar distance from The Rising Sun Country Park, a green oasis of 162 hectares. With ponds, woodlands and extensive grasslands, the site is an ideal place to relax and enjoy the great outdoors. Killingworth Shopping Centre is also only a 10 minute drive, offering another large supermarket and various high street shops; whilst The Lakeside Centre is also close by, a leisure centre which offers a swimming pool, indoor sports courts, a gym and a soft play for children. Palmersville Metro Station only a short walk away giving easy access to City centre Newcastle Upon Tyne and the coast Whitley Bay and Tynemouth.

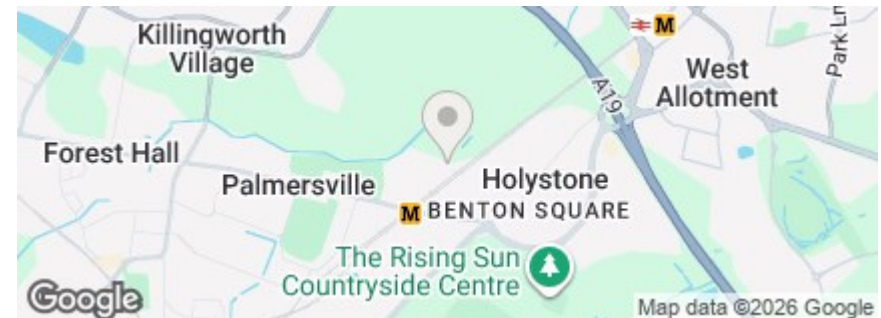
Freehold
Council Tax: E
EPC Rating: 77



GROSS INTERNAL AREA
FLOOR 1 56.9 m² FLOOR 2 64.5 m²
EXCLUDED AREAS : SHED 4.0 m²
TOTAL : 121.4 m²



GROSS INTERNAL AREA
FLOOR 1 56.9 m² FLOOR 2 64.5 m²
EXCLUDED AREAS : SHED 4.0 m²
TOTAL : 121.4 m²





Alexander Hudson Estates
The Printworks
20 Arrow Close
NE12 6QN

0191 268 7433
sales@alexanderhudson.co.uk