



# Alexander Hudson Estates

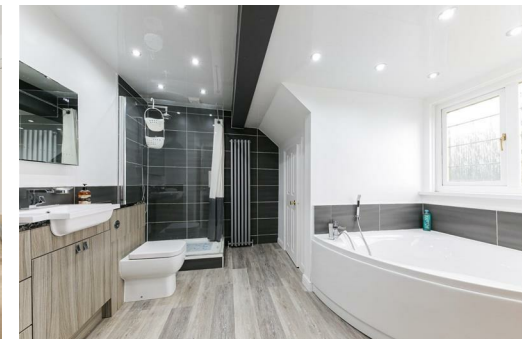
---

Sales Particulars



# Alexander Hudson Estates

Greenhaugh, West Moor, NE12





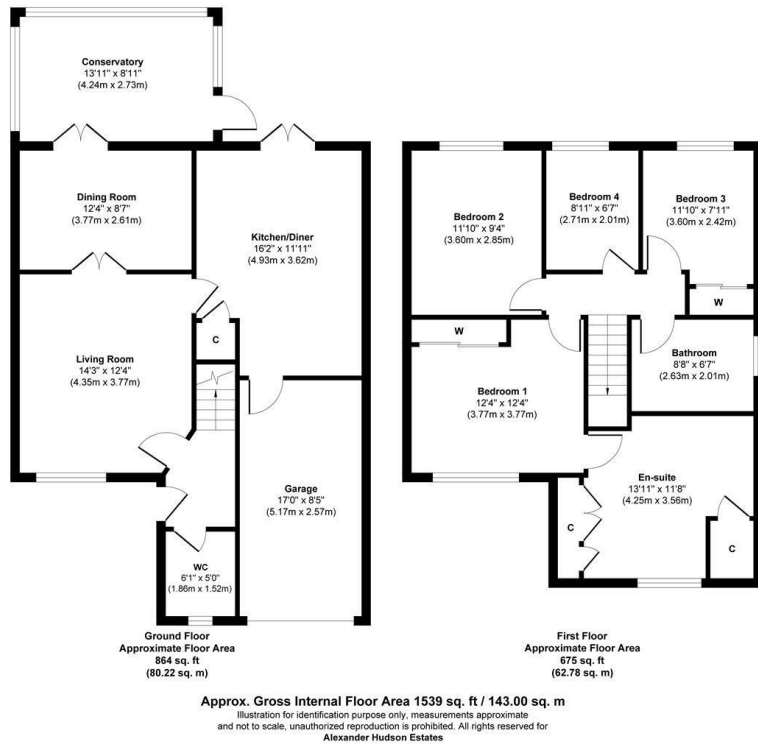
# The Property

Alexander Hudson Estates are pleased to introduce to market this beautifully presented four bedroom detached family home. Enjoying a superb corner garden site on this much sought after development in West Moor.

The property enjoys spacious accommodation, finished to a lovely standard comprising; Entrance Hall with Cloakroom/wc. Attractive lounge to front elevation giving access to the dining room via Double doors. The dining room enjoys French doors giving access onto the garden. Well appointed contemporary kitchen with central island, integrated appliances and French doors leading onto the gardens. From the first floor landing is the principal bedroom which has fitted wardrobes and en suite bathroom/wc. Second double bedroom, two further good sized bedrooms one of which has fitted wardrobe and family bathroom/wc. Externally, the property has Driveway parking and single integral garage to the front. Mature gardens extend to three elevations and are landscaped to include easily maintained gravelled borders and beds, two patio areas and artificial lawns.

Close to Gosforth, Balliol, and Quorum Business Parks, with the A1 and A19 easily accessible for those commuting further afield. West Moor is also adjacent to Killingworth, home to The Killingworth Centre (anchored by a large Morrison's supermarket), and the White Swan Centre, which includes a Doctors' surgery, activity hall, cafe and Killingworth Library. The Lakeside Centre offers up various leisure facilities including a swimming pool and soft play for children.

Freehold  
Council Tax: E  
EPC Rating: 59





---

Alexander Hudson Estates  
The Printworks  
20 Arrow Close  
NE12 6QN

0191 268 7433  
[sales@alexanderhudson.co.uk](mailto:sales@alexanderhudson.co.uk)