



# Alexander Hudson Estates

---

Sales Particulars

# Alexander Hudson Estates

Hillary Avenue, Forest Hall, NE12





# The Property

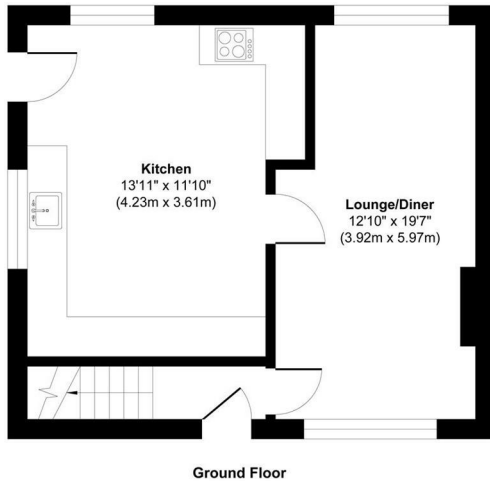
Alexander Hudson Estates is delighted to introduce to the market this well-presented, three-bedroom semi-detached family home, located in the highly sought-after residential area of Forest Hall, NE12

The accommodation briefly comprises an entrance hallway leading into a spacious open-plan living and dining area, which flows through to a bright and airy, modern fitted kitchen. Three bedrooms and a contemporary family bathroom are located on the first floor.

Externally, the home features a private, low-maintenance driveway to the front which offers private off street parking for multiple vehicles. A beautifully maintained rear garden with paved patio area, lawn and planted borders is located to the rear.

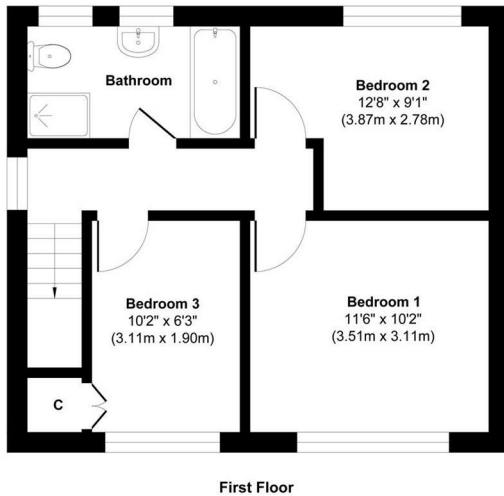
The property is within easy reach of local attractions such as Killingworth Shopping Centre, White Swan Centre, The Lakeside Centre, and Killingworth Boating Lake, with its scenic bridleways and Lakeside Park offering tranquil outdoor spaces. Excellent public transport links provide easy access to Newcastle City Centre, Quorum, Balliol, and Gosforth Business Parks, while the nearby A19 ensures convenient travel further afield.

Freehold  
Council Tax: A  
EPC Rating: 70



Ground Floor

Approx. Gross Internal Floor Area 436 sq. ft / 40.53 sq. m  
Illustration for identification purpose only, measurements approximate  
and not to scale, unauthorized reproduction is prohibited. All rights reserved for  
Alexander Hudson Estates



First Floor

Approx. Gross Internal Floor Area 436 sq. ft / 40.53 sq. m  
Illustration for identification purpose only, measurements approximate  
and not to scale, unauthorized reproduction is prohibited. All rights reserved for  
Alexander Hudson Estates





---

Alexander Hudson Estates  
The Printworks  
20 Arrow Close  
NE12 6QN

0191 268 7433  
[sales@alexanderhudson.co.uk](mailto:sales@alexanderhudson.co.uk)