



# Alexander Hudson Estates

---

Sales Particulars

# Alexander Hudson Estates

Vineyard Close, Moorfields, NE12





# The Property

Alexander Hudson Estates are delighted to welcome to the market this four bedroom, detached family home. Situated in the increasingly popular Moorfields Estate, neighbouring a range of amenities, schooling and transport links.

The ground floor comprises a welcoming entrance hallway with a convenient downstairs WC, a bright and spacious living room, a second reception room ideal as a dining room, office or snug, and an open-plan kitchen/dining area with integrated appliances and patio doors opening out to the rear garden.

Upstairs, there are four generously sized bedrooms, two of which benefit from modern en-suite shower rooms, along with a stylish family bathroom.

Externally, the property features beautifully landscaped front and rear gardens, a private driveway, an attached garage, and a fully equipped garden studio - ideal for use as a home office, gym, or hobby room.

Close to local schools, bridleways, parks and Miller & Carter restaurant and bar, this represents a brilliant opportunity to purchase a family home close to amenities and within easy reach of both the City & Coast. Ideal location for commuting to Newcastle city centre, the various office parks at Gosforth, Cobalt and Quorum along with easy access to key transport routes across the city and further afield.

Freehold  
Council Tax: F  
EPC Rating: 85

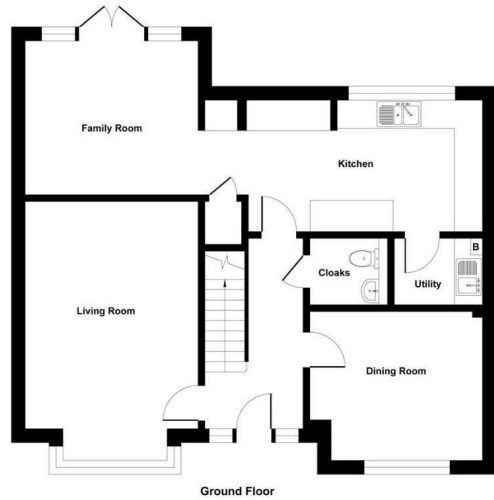


Illustration for identification purpose only, measurements approximate and not to scale, unauthorized reproduction is prohibited. All rights reserved for Alexander Hudson Estates

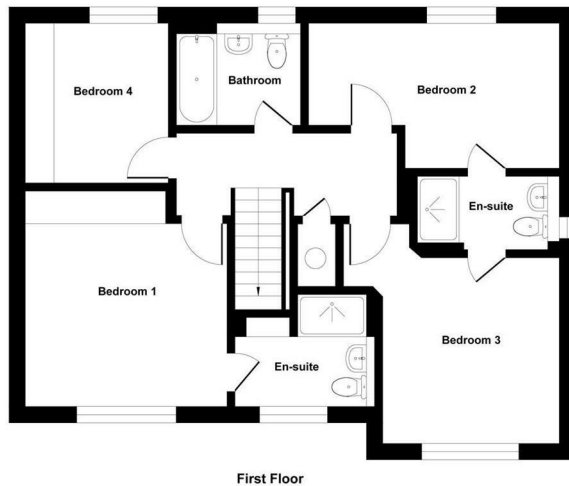


Illustration for identification purpose only, measurements approximate and not to scale, unauthorized reproduction is prohibited. All rights reserved for Alexander Hudson Estates





---

Alexander Hudson Estates  
The Printworks  
20 Arrow Close  
NE12 6QN

0191 268 7433  
[sales@alexanderhudson.co.uk](mailto:sales@alexanderhudson.co.uk)