



Alexander Hudson Estates

Sales Particulars

Alexander Hudson Estates

Miller Close, Palmersville, NE12



The Property

Alexander Hudson Estates is delighted to present this well-appointed four-bedroom detached family home, ideally situated in a sought-after residential area of Palmersville. Boasting a generous rear garden, this property is perfectly located close to a variety of local amenities, excellent transport links, and within the catchment area of the highly regarded primary school.

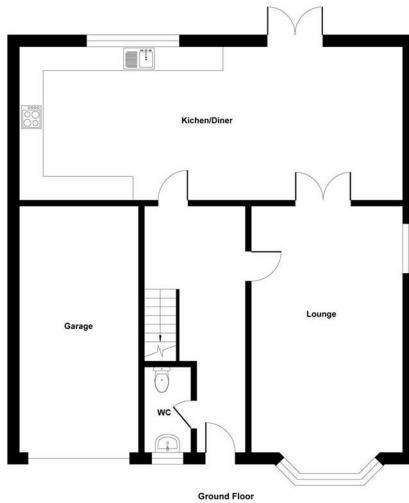
The ground floor features a welcoming entrance hallway with a convenient cloakroom WC, a modern open-plan kitchen and dining room with direct access to the expansive rear garden, and a spacious living room, ideal for family life and entertaining.

Upstairs, the property offers four well-proportioned bedrooms, including a principal bedroom with an en-suite shower room, alongside a separate contemporary family bathroom.

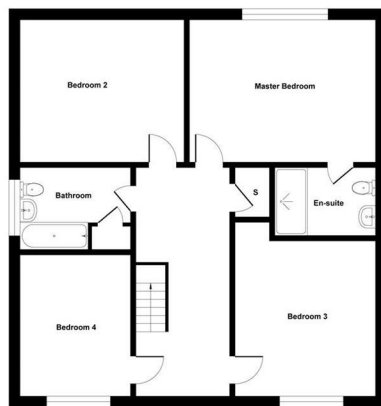
Externally, there is a large private driveway providing ample off-street parking, and a generous rear garden offering a peaceful space to relax and enjoy the outdoors.

Conveniently located, the property is just a 5-minute drive or 15-minute walk from a large Asda supermarket, and within easy reach of the beautiful Rising Sun Country Park, a 162-hectare nature reserve with ponds, woodland, and open green spaces. The Killingworth Shopping Centre is just 10 minutes away, offering a range of high street shops and another large supermarket. Families will also appreciate proximity to The Lakeside Centre, featuring a swimming pool, sports courts, gym, and children's soft play area.

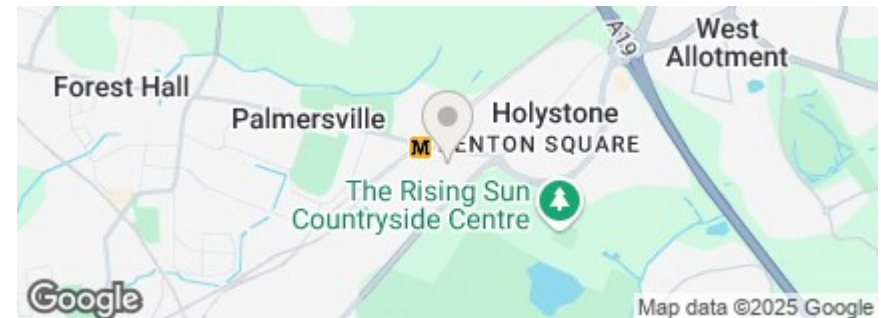
Freehold
Council Tax: D
EPC Rating: 0



Ground Floor
Illustration for identification purpose only, measurements approximate and not to scale, unauthorized reproduction is prohibited. All rights reserved for Alexander Hudson Estates



First Floor
Illustration for identification purpose only, measurements approximate and not to scale, unauthorized reproduction is prohibited. All rights reserved for Alexander Hudson Estates





Alexander Hudson Estates
The Printworks
20 Arrow Close
NE12 6QN

0191 268 7433
sales@alexanderhudson.co.uk