



Alexander Hudson Estates

Sales Particulars

Alexander Hudson Estates

Blanchland Drive, Holywell, NE25



The Property

Alexander Hudson Estates are delighted to welcome to the market this well presented, four bedroom detached family home situated on a quiet residential development in the sought after village of Holywell, NE25.

Accommodation briefly comprises; Entrance Hall with stairs to first floor and ground floor Wc. Attractive lounge to the front which has open access to a well appointed kitchen/dining room including integrated appliances and French doors from the dining area, lead out to a pleasant sun room overlooking the rear gardens. Beyond the kitchen, there is a second fitted kitchen and utility room. From the first floor landing is the principal bedroom with fitted wardrobes and ensuite shower room/wc. Two Further double bedrooms, both with fitted wardrobes and a pleasant fourth single bedroom. A large family bathroom with slipper bath and separate shower/wc.

Externally there is driveway parking for several cars leading to a single integral garage. To the rear are attractive lawned gardens with raised decking and patio area.

Holywell Village is conveniently located near Seaton Delaval, just a few miles from Whitley Bay and Seaton Sluice. It offers easy access to transport links for commutability to the Coast and Newcastle City Centre and well as offering local shops, cafes, pubs and the scenic Holywell Dene is on the doorstep, providing beautiful nature walks, There are popular schools nearby, making it an ideal location for families.

Freehold
Council Tax: D
EPC Rating: 74

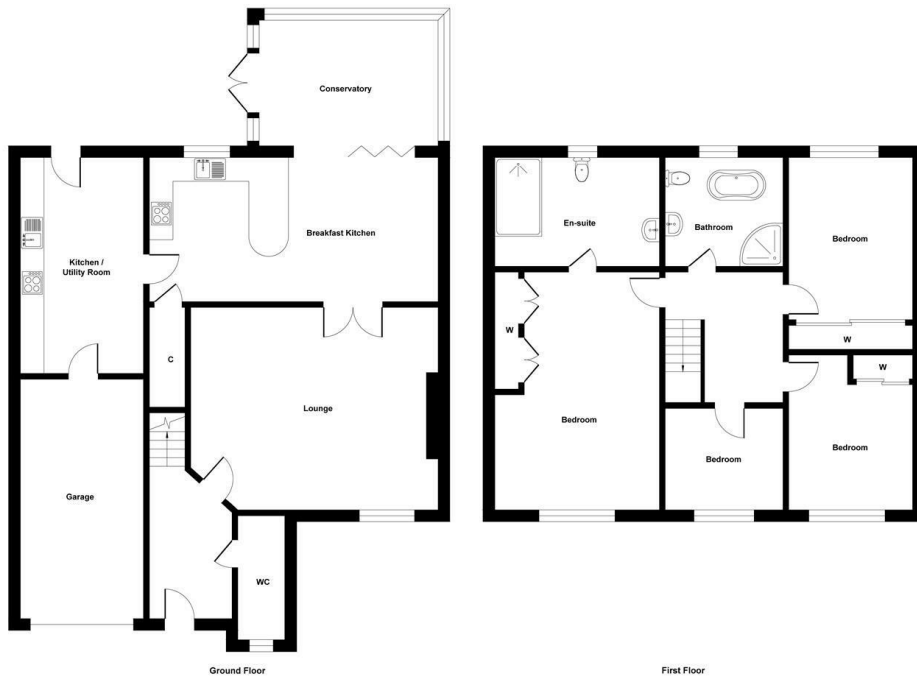


Illustration for identification purpose only, measurements approximate and not to scale, unauthorized reproduction is prohibited. All rights reserved for Alexander Hudson Estates





Alexander Hudson Estates
The Printworks
20 Arrow Close
NE12 6QN

0191 268 7433
sales@alexanderhudson.co.uk