

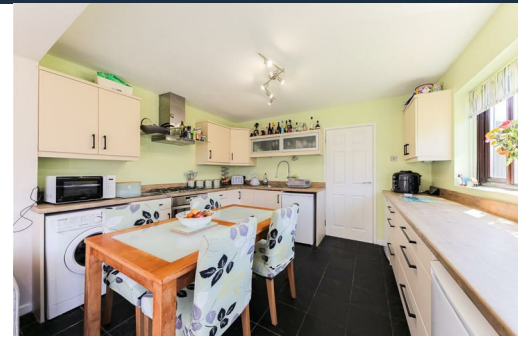


Alexander Hudson Estates

Sales Particulars

Alexander Hudson Estates

Moor View Walk, Camperdown, NE12



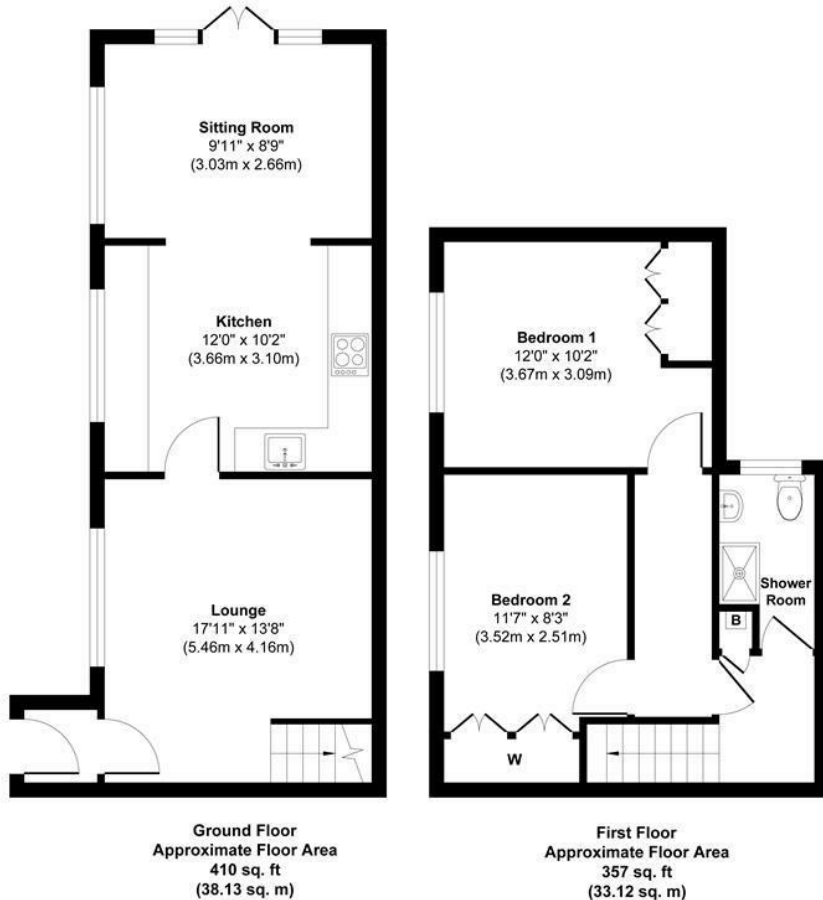
The Property

Alexander Hudson are pleased to welcome to the market this attractively presented two bedroom semi detached home, offering spacious accommodation, well positioned within the popular and historical village of Camperdown, just south of Burradon. Close-by to parks and bridleways providing plenty of scenic walks, along with local amenities and The Killingworth Shopping Centre which is just a short drive away and anchored by a large supermarket.

The accommodation comprises of entrance lobby giving access a generous lounge which has hard flooring throughout and open staircase to the first floor. The modern fitted kitchen with integrated appliances extends to a garden room providing dining area and snug with French doors out onto the garden. From the first floor landing there are two large double bedrooms both with fitted wardrobes and a contemporary shower room/wc including walk in shower. Externally gardens surround to three elevations and are lawned with patio and decking within a walled and fenced surround with double access gates to a gravelled driveway providing off street parking.

The White Swan Centre and The Lakeside Centre are a short drive away providing plenty of amenities and leisure facilities. Ofsted-rated Outstanding and Good Primary Schools are also close-by, along with excellent transport links including the A19 and a main bus route providing links to Newcastle City Centre, Quorum, Balliol and Gosforth Business Parks.

Freehold
Council Tax: B
EPC Rating: null



Approx. Gross Internal Floor Area 767 sq. ft / 71.25 sq. m

Illustration for identification purpose only, measurements approximate and not to scale, unauthorized reproduction is prohibited. All rights reserved for Alexander Hudson Estates





Alexander Hudson Estates
The Printworks
20 Arrow Close
NE12 6QN

0191 268 7433
sales@alexanderhudson.co.uk