



# Alexander Hudson Estates

---

Sales Particulars

# Alexander Hudson Estates

Oxen Drive, East Benton Rise, NE28





# The Property

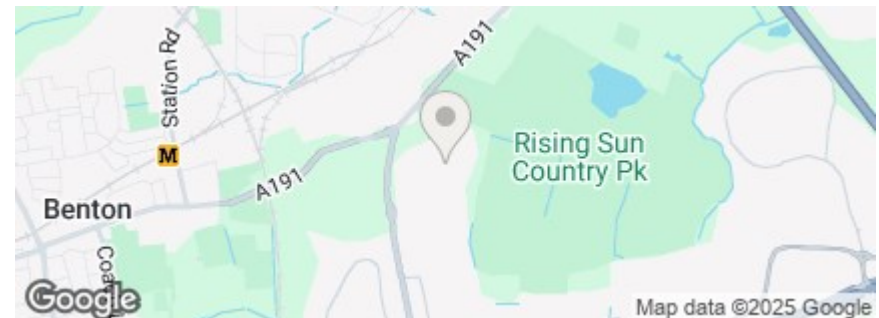
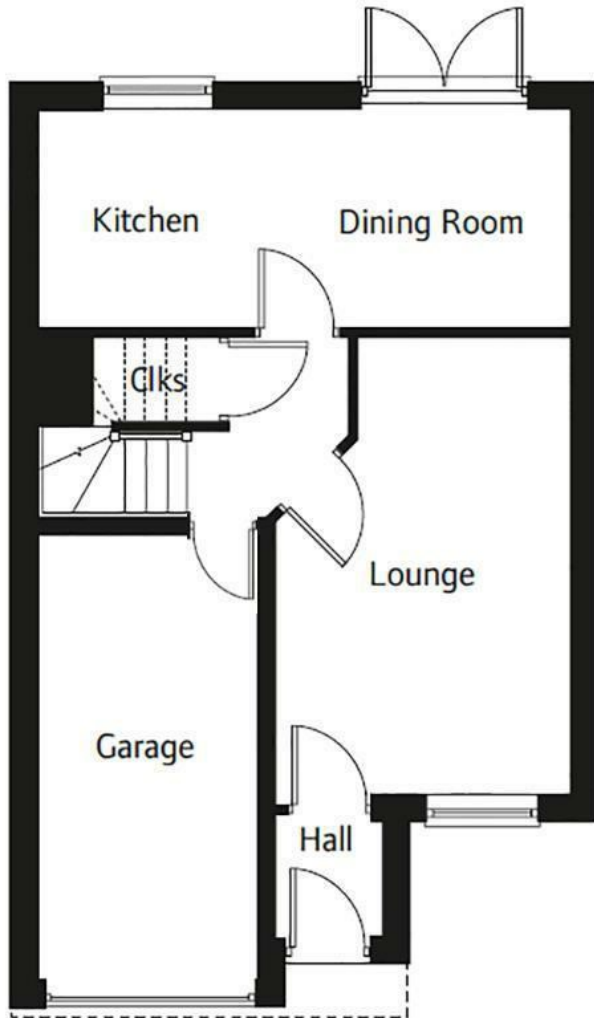
Alexander Hudson Estates is delighted to present this immaculately maintained, three-bedroom, semi-detached family home in the highly sought-after East Benton Rise, NE28. Ideally located near the Coast Road and A19, it offers excellent transport links across Newcastle and beyond.

Beautifully styled and well-kept throughout, the property features a welcoming entrance hallway, a contemporary open-plan kitchen and dining area, and a comfortable, inviting living room. Upstairs, you'll find a modern family bathroom and three spacious bedrooms, including a primary suite with an En-suite shower room and private balcony.

Externally, the home boasts a well-manicured front lawn and a driveway for off-street parking. The integral garage has been thoughtfully converted into a versatile office/playroom, providing additional family living space. To the rear, a sunny, lawned garden with a patio area offers the perfect setting for outdoor relaxation and entertaining.

This fantastic property is within walking distance of excellent schools and conveniently close to Benton's local amenities, including a large supermarket, restaurants, and shopping facilities. The popular Silverlink Retail Park is just a short 10-minute drive away.

Freehold  
Council Tax: C  
EPC Rating: 80





---

Alexander Hudson Estates  
The Printworks  
20 Arrow Close  
NE12 6QN

0191 268 7433  
[sales@alexanderhudson.co.uk](mailto:sales@alexanderhudson.co.uk)