



# Alexander Hudson Estates

---

Sales Particulars

# Alexander Hudson Estates

Hawks Edge, West Moor, NE12





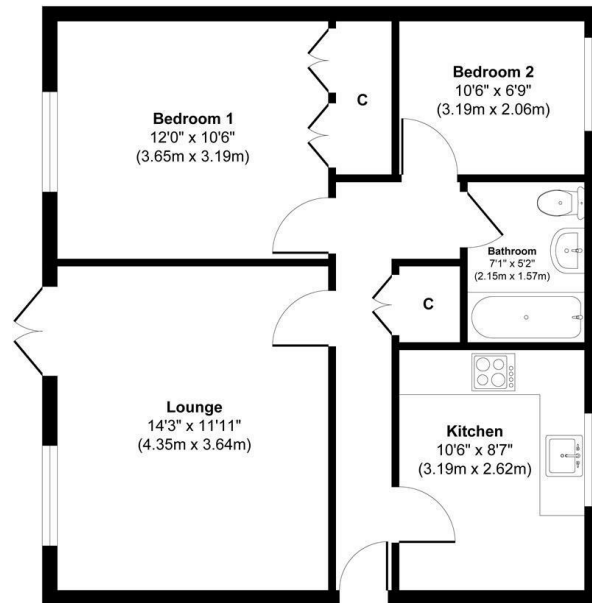
# The Property

Alexander Hudson Estates introduces this bright and airy, two-bedroom ground floor apartment situated in the popular development of Hawks Edge in Westmoor. Close-by to local amenities including schools, supermarkets, shops and leisure facilities along with excellent transport links across the region.

The apartment features a welcoming entrance hallway that leads into the spacious living room, offering a comfortable area for relaxation and entertaining. The open-plan kitchen diner is a key highlight, providing a modern, sociable space perfect for both cooking and dining. The property also includes a well-appointed bathroom, and two generously sized double bedrooms, each offering ample space for furniture and storage. Externally, the property is meticulously maintained and benefits from the added convenience of a private parking bay, ensuring secure parking right at your doorstep.

Close to Gosforth, Balliol, and Quorum Business Parks, with the A1 and A19 easily accessible for those commuting further afield. West Moor is also adjacent to Killingworth, home to The Killingworth Centre (anchored by a large Morrison's supermarket), and the White Swan Centre, which includes a Doctors' surgery, an activity hall, a cafe and Killingworth Library. The Lakeside Centre is also close by, a leisure centre which offers a swimming pool, indoor sports courts, a gym and even a soft play for children.

Leasehold  
Council Tax: B  
EPC Rating: null



Floor Plan

Approx. Gross Internal Floor Area 582 sq. ft / 54.09 sq. m  
Illustration for identification purpose only, measurements approximate  
and not to scale, unauthorized reproduction is prohibited. All rights reserved for  
Alexander Hudson Estates





---

Alexander Hudson Estates  
The Printworks  
20 Arrow Close  
NE12 6QN

0191 268 7433  
[sales@alexanderhudson.co.uk](mailto:sales@alexanderhudson.co.uk)