

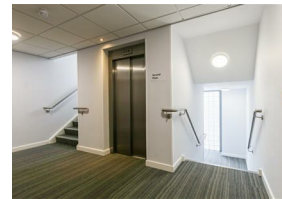


Alexander Hudson Estates

Sales Particulars

Alexander Hudson Estates

Midlothian Court, Worsdell Drive, NE8



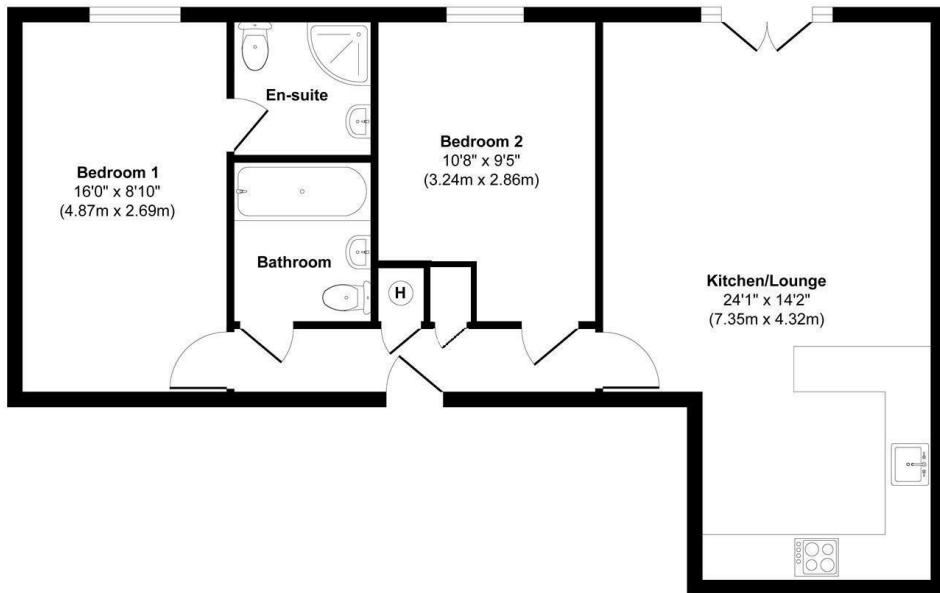
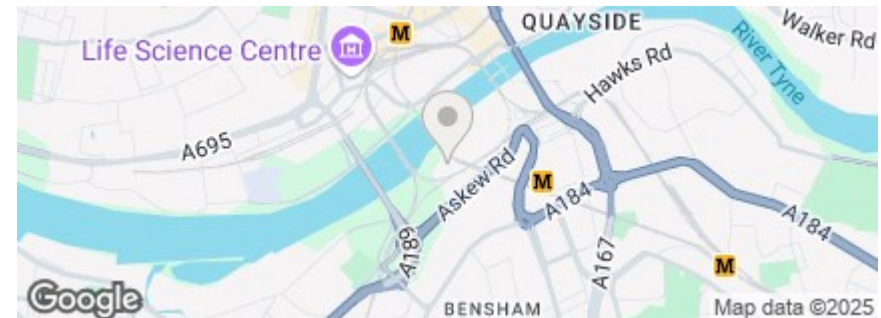
The Property

Alexander Hudson Estates are delighted to present this fantastic two-bedroom apartment in the sought-after Midlothian Court, NE8. Boasting a bright and spacious interior, this modern home features an open-plan layout, generous room sizes, and an undercover, allocated parking space.

Upon entering, a welcoming hallway provides access to all rooms, including a large lounge/diner with French doors that allow natural light to flood the space. The contemporary kitchen is fully fitted with stylish wood-effect units and integrated appliances. The main bedroom is well-proportioned and benefits from direct access to a sleek and newly reburnished ensuite. A second spacious bedroom and a modern bathroom complete this beautifully presented apartment.

Overlooking a private courtyard, the apartment offers a tranquil and comfortable living environment while remaining just moments from Newcastle City Centre and the Quayside. Excellent transport links, local shops, and cafes are all within easy reach, offering the perfect blend of city convenience and residential privacy. The property also includes an allocated parking bay, with additional visitor bays available for guests.

Leasehold
Council Tax: C
EPC Rating: 74



Floor Plan

Approx. Gross Internal Floor Area 708 sq. ft / 65.75 sq. m
Illustration for identification purpose only, measurements approximate
and not to scale, unauthorized reproduction is prohibited. All rights reserved for
Alexander Hudson Estates



Alexander Hudson Estates
The Printworks
20 Arrow Close
NE12 6QN

0191 268 7433
sales@alexanderhudson.co.uk