

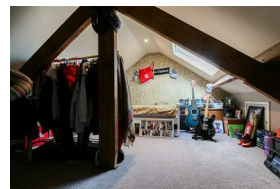


Alexander Hudson Estates

Sales Particulars

Alexander Hudson Estates

Hall Drive, Camperdown, NE12



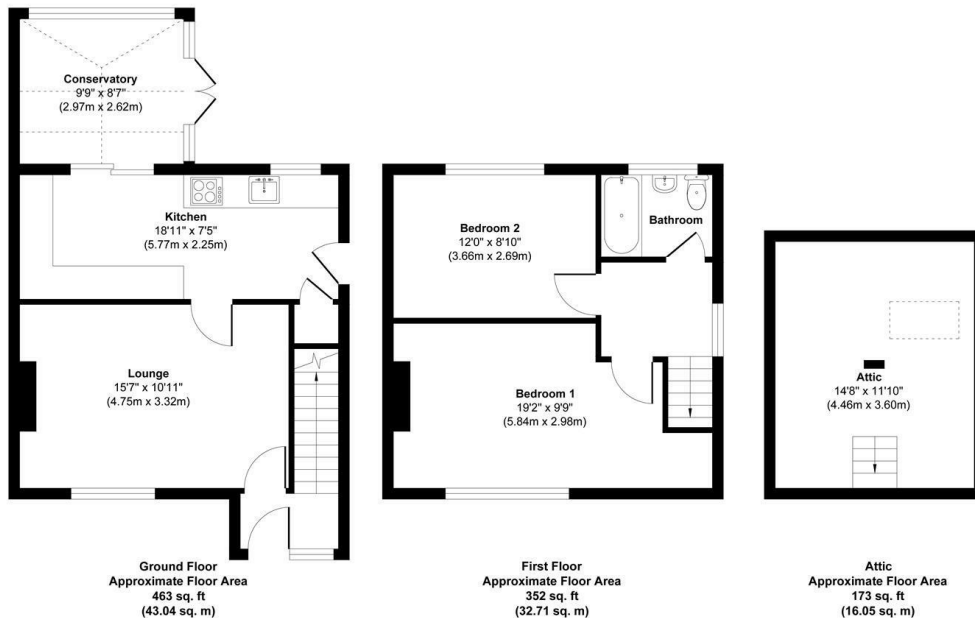
The Property

Alexander Hudson Estates is proud to present this bright and airy two-bedroom house located in Camperdown. This charming property is ideally situated close to local amenities, including schools, supermarkets, shops, and leisure facilities. With excellent transport links, you'll have easy access to the wider region.

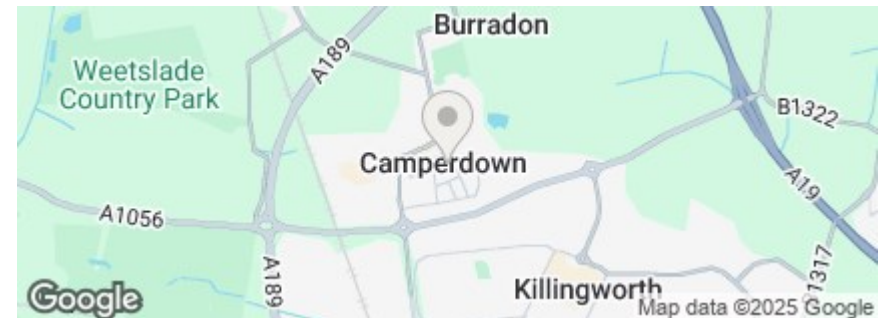
A small entrance porch leads into a spacious living room featuring a cosy log burner, perfect for relaxing evenings. The fully integrated kitchen offers modern conveniences and provides access to a conservatory currently being used as a dining space by the current owner, offering a versatile and inviting area. To the first floor is a modern family bathroom and two generously sized bedrooms, each offering ample natural light and comfortable living spaces.

In the property there is a converted attic space, accessible via a drop-down ladder. This area is currently used as a bedroom, but it could easily serve as a home office, games room, or additional storage, offering flexibility to suit. Externally there is a block paved driveway to the front of the property and a low-maintenance garden to the rear with a decked area and artificial grass. This property offers a unique opportunity for first-time buyers, young families, or anyone looking for a well-located home.

Freehold
Council Tax: A
EPC Rating: 64



Approx. Gross Internal Floor Area 988 sq. ft / 91.80 sq. m
Illustration for identification purpose only, measurements approximate
and not to scale, unauthorized reproduction is prohibited. All rights reserved for
Alexander Hudson Estates





Alexander Hudson Estates
The Printworks
20 Arrow Close
NE12 6QN

0191 268 7433
sales@alexanderhudson.co.uk