



# Alexander Hudson Estates

---

Sales Particulars



# Alexander Hudson Estates

Englefield Close, Kingston Park, NE3



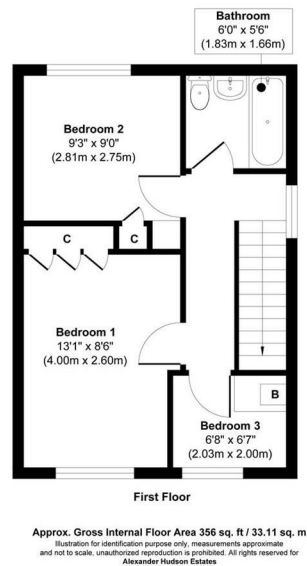
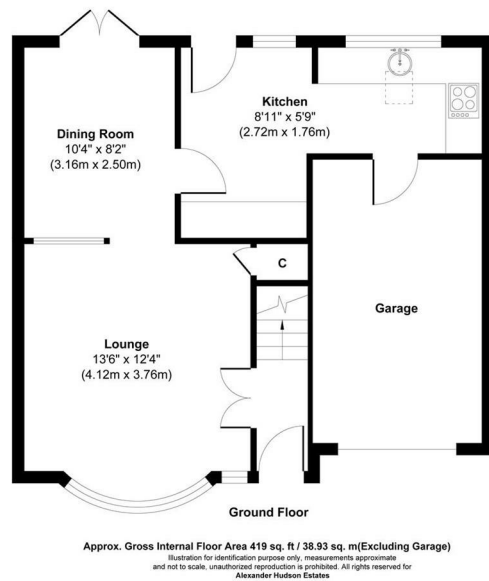


# The Property

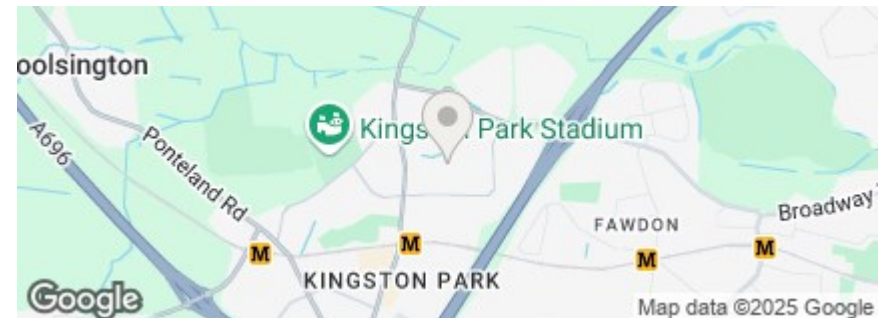
Alexander Hudson Estates are delighted to market this three bedroom semi-detached family home close to local shops, schools, and amenities.

On entering the property a brief lobby then a spacious lounge dining room and light and airy kitchen which has been extended to offer more storage space with further access to the attached garage. To the first floor there are three spacious bedrooms and a family bathroom. Externally there are easy to maintain gardens to both the front and rear and there is also a driveway to the front of the property for easy access to the propriety.

Kingston Park is renowned for its excellent amenities, including shops, schools, and transport links, making it an ideal location for both families and professionals. This home not only offers a comfortable living space but also the convenience of being close to everything you need.



Freehold  
Council Tax: B  
EPC Rating: 67





---

Alexander Hudson Estates  
The Printworks  
20 Arrow Close  
NE12 6QN

0191 268 7433  
[sales@alexanderhudson.co.uk](mailto:sales@alexanderhudson.co.uk)