



Alexander Hudson Estates

Sales Particulars

Alexander Hudson Estates

Lansdowne Road, Forest Hall, NE12

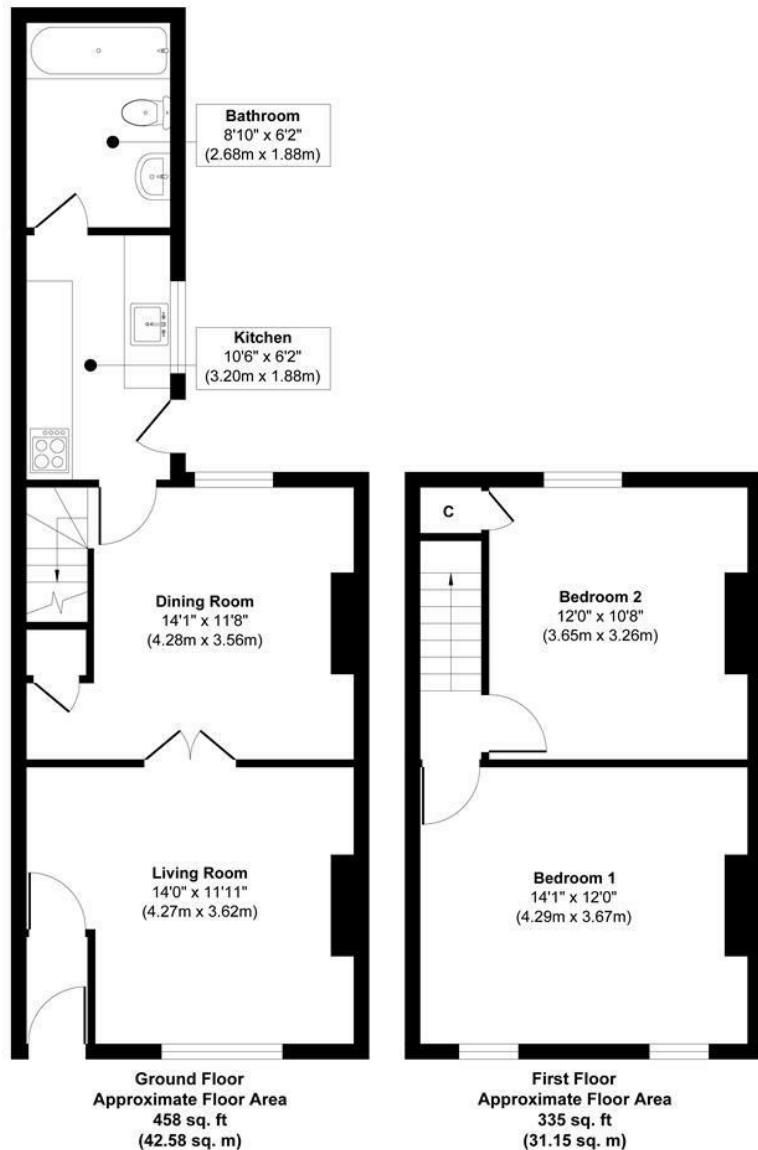


The Property

Alexander Hudson Estates introduces to market this newly decorated, two-bedroom, terraced family home, situated within walking distance to Forest Hall High Street, NE12.

Well presented and maintained throughout, the property briefly comprises of an entrance porch, living room, dining room, kitchen and bathroom. Two generously sized bedrooms are located on the first floor. Externally, the property features a low maintenance and sunny rear yard.

The property is located within walking distance of several primary schools, George Stephenson High School and Forest Hall's High Street which includes a Sainsbury's Local, numerous eateries and a pharmacy. Springfield Park, with its Community Centre and Tennis Club, is also within walking distance of the property. Several local pub/restaurants and a mid-sized supermarket are close by. The property sits just off a main bus route and is within a twenty-minute walk away from Benton Metro Station which provides easy access to Newcastle City Centre, the coast and further afield.



Approx. Gross Internal Floor Area 793 sq. ft / 73.73 sq. m
Illustration for identification purpose only, measurements approximate
and not to scale, unauthorized reproduction is prohibited. All rights reserved for
Alexander Hudson Estates

Freehold
Council Tax: A
EPC Rating: 69





Alexander Hudson Estates
The Printworks
20 Arrow Close
NE12 6QN

0191 268 7433
sales@alexanderhudson.co.uk