



# Alexander Hudson Estates

---

Sales Particulars



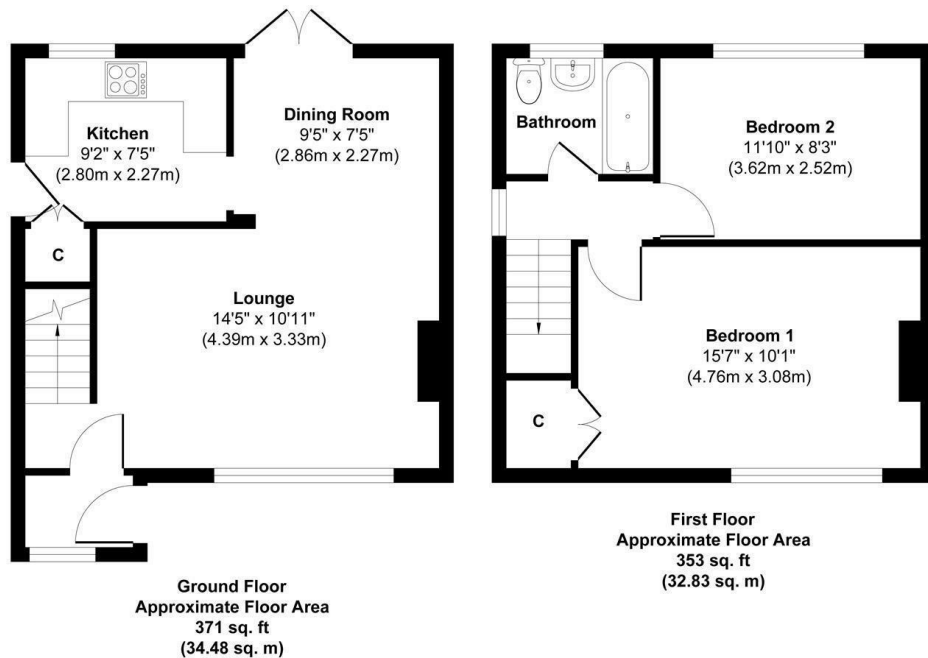


# The Property

Alexander Hudson Estates introduces to market this immaculately presented two-bedroom, semi-detached family home in the popular residential village of Dudley, Cramlington.

Newly updated by it's current owners throughout, the property briefly comprises of; entrance porch, spacious open plan living/dining room and a modern kitchen. To the first floor lie two generously sized bedrooms and a family bathroom. Externally, the front of the property features a low maintenance garden and paved driveway providing ample off street private parking. To the rear sits a well presented garden with patio area and mature borders.

The property is ideally located and within easy reach of local schools, amenities and transport links providing journeys towards Newcastle City Centre, the Coast, Northumberland and beyond.



Freehold  
Council Tax: A  
EPC Rating: 54





---

Alexander Hudson Estates  
The Printworks  
20 Arrow Close  
NE12 6QN

0191 268 7433  
[sales@alexanderhudson.co.uk](mailto:sales@alexanderhudson.co.uk)