

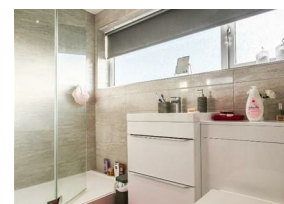
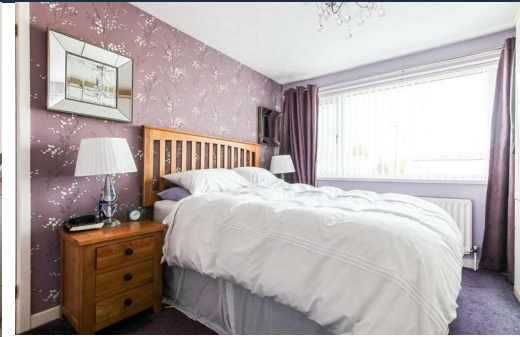


Alexander Hudson Estates

Sales Particulars

Alexander Hudson Estates

Longstone Court, Killingworth, NE12

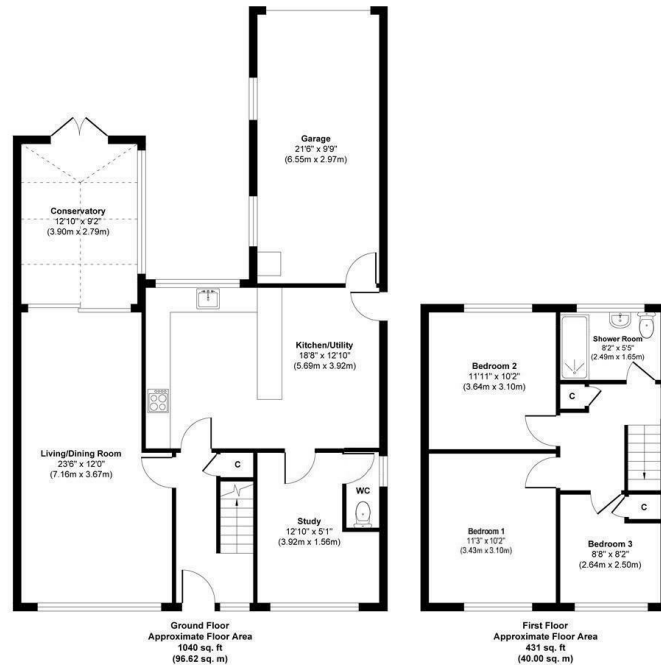


The Property

Alexander Hudson Estates introduces this well-presented, three-bedroom, family home situated in the popular suburb of Killingworth, NE12.

The property briefly comprises of an entrance hallway, large living room through dining room, dining kitchen, conservatory extension, study and downstairs WC. On the first floor lies a modern family bathroom and three generously sized bedrooms. Externally the front of the property benefits from a well presented lawned garden with planted borders and a sunny landscaped garden, single garage and private driveway is located to the rear.

The property is within walking distance to local schools and amenities including The Lakeside Centre and Killingworth Centre which are a 10-minute walk away and provide a range of leisure facilities and shops including a large supermarket and eateries. Excellent transport links with a main bus route providing access to Newcastle City Centre with the A1 and A19 also close-by for trips to the coast and further afield.



Approx. Gross Internal Floor Area 1471 sq. ft / 136.62 sq. m (Including Garage)

Illustration for identification purpose only, measurements approximate and not to scale, unauthorized reproduction is prohibited. All rights reserved for Alexander Hudson Estates

Freehold
Council Tax: C
EPC Rating: 68





Alexander Hudson Estates
The Printworks
20 Arrow Close
NE12 6QN

0191 268 7433
sales@alexanderhudson.co.uk