



# Alexander Hudson Estates

---

Sales Particulars



# Alexander Hudson Estates

Goathland Avenue, Benton, NE12





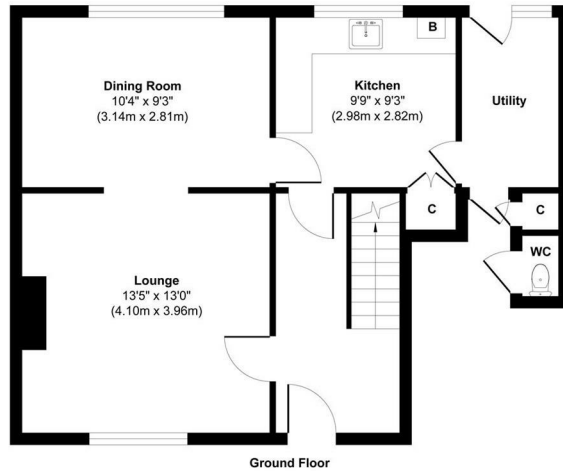
# The Property

Alexander Hudson Estates are thrilled to introduce to market this immaculately presented, three-bedroom semi-detached property located within the popular neighborhood of Benton, close to transport-links, schooling and amenities.

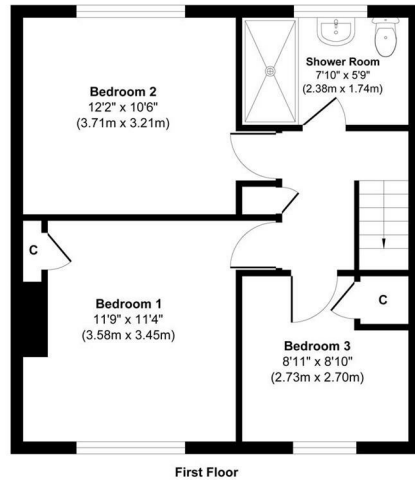
Boasting a large amount of entertaining space to the ground floor, consisting of an entrance hallway, living room, additional dining room, kitchen and utility room, this property is bright and spacious. To the first floor lies a bathroom and three bedrooms. Externally, the property boasts a private and low-maintenance rear garden with lawn and patio area.

This lovely family home sits in a prime location for travelling across the city and to the Coast, with great links to the close-by Benton metro station. Additionally within walking distance there are great schools and a range of local amenities such as shops, pubs and restaurants.

Please note, this property is of non-standard construction.

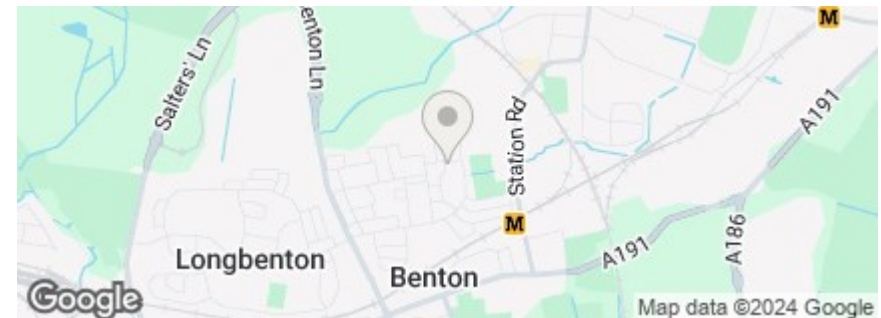


Approx. Gross Internal Floor Area 560 sq. ft / 52.05 sq. m  
Illustration for identification purpose only, measurements approximate and not to scale, unauthorized reproduction is prohibited. All rights reserved for Alexander Hudson Estates



Approx. Gross Internal Floor Area 462 sq. ft / 42.93 sq. m  
Illustration for identification purpose only, measurements approximate and not to scale, unauthorized reproduction is prohibited. All rights reserved for Alexander Hudson Estates

Freehold  
Council Tax: A  
EPC Rating: 85





---

Alexander Hudson Estates  
The Printworks  
20 Arrow Close  
NE12 6QN

0191 268 7433  
[sales@alexanderhudson.co.uk](mailto:sales@alexanderhudson.co.uk)