



# Alexander Hudson Estates

---

Sales Particulars







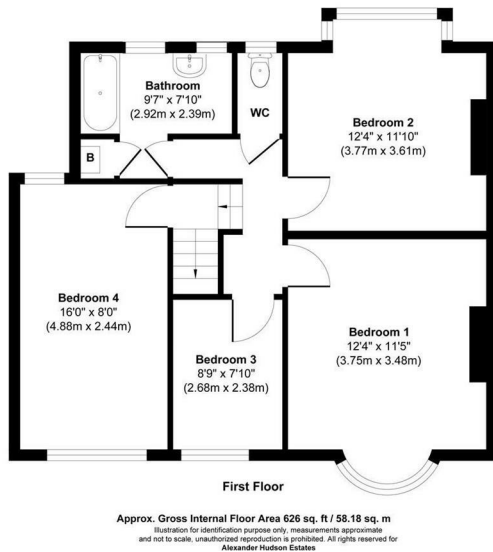
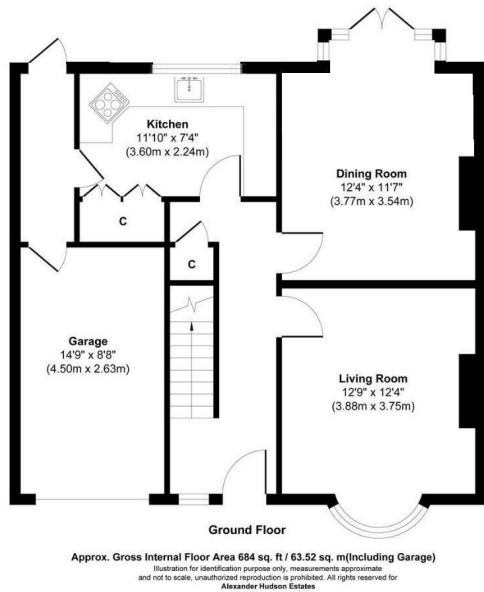
# The Property

Alexander Hudson Estates introduces to the market this four-bedroom semi-detached family home located in the popular residential suburb of Benton, Newcastle. Ideally situated off Benton Road, it is within walking distance of The Freeman Hospital, local supermarkets, shops, restaurants, pubs and cafes.

Beautifully decorated throughout, the property briefly comprises of an entrance porch, hallway, living room with large bay window and fireplace, kitchen, and a large dining room overlooking the rear garden. On the first floor lies a family bathroom, separate WC and four bedrooms. A driveway at the front provides ample off-street, private parking. The attached garage is plumbed for use as a utility room, whilst a generously sized garden offers plenty of outside space for entertaining in the warmer summer months.

Situated close to Four Lane Ends Metro Station, it is in a prime location for travelling across the city and to the coast. Scenic walks and nature routes are also within easy reach including Paddy Freemans, Gosforth Park and the Rising Sun Country Park.

Freehold  
Council Tax: D  
EPC Rating: 67





---

Alexander Hudson Estates  
The Printworks  
20 Arrow Close  
NE12 6QN

0191 268 7433  
[sales@alexanderhudson.co.uk](mailto:sales@alexanderhudson.co.uk)