



Alexander Hudson Estates

Sales Particulars

Alexander Hudson Estates

The Limes, West Moor, NE12



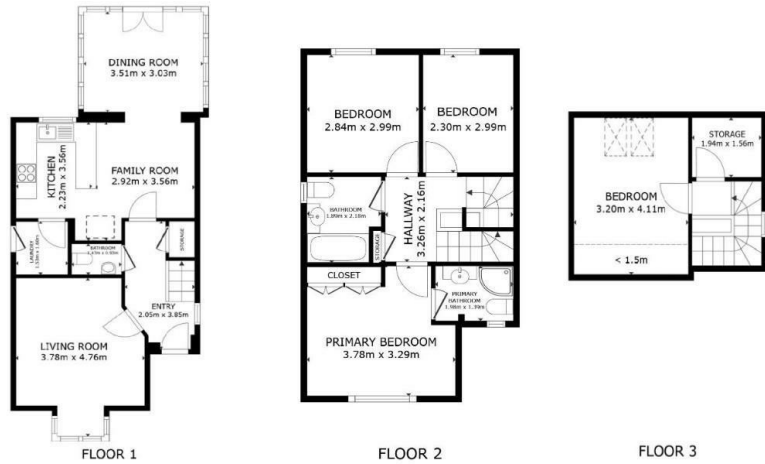
The Property

Alexander Hudson Estates are pleased to introduce to market this spacious and immaculately presented, four-bedroom detached home with substantial living space over three floors with no onward chain. Situated in on The Limes, West Moor, this property represents a fantastic opportunity to acquire a family home in a popular area. Close-by to amenities including local shops, restaurants, schooling and transport links.

Briefly comprising of an entrance hallway, cloakroom WC, a separate living room and a large spacious family room offering kitchen, dining and living areas. On the first floor lies a family bathroom and three bedrooms, the master bedroom having an ensuite. On the top floor lies another spacious bedroom with storage. The detached garage at the rear has been converted to offer office / playroom / studio space accessed through the garden. Private parking for multiple cars is available at the rear and side of the property. There is a small garden to the front and a well-maintained, spacious gardens to the back of the property.

The Killingworth Shopping Centre, White Swan Centre and The Lakeside Centre are all close-by and within walking distance. Both Killingworth Boating Lake with its bridleways and Lakeside Park offer idyllic settings, perfect for family walks and exercise. The property sits close to a bus route, with links to Newcastle City Centre, Quorum, Balliol and Gosforth Business Parks; whilst the A19 is only a short drive away for trips further afield.

Freehold
Council Tax: D
EPC Rating: 0



GROSS INTERNAL AREA
FLOOR 1 55.1 m² FLOOR 2 42.5 m² FLOOR 3 18.5 m²
EXCLUDED AREAS: REDUCED HEADROOM 2.6 m²
TOTAL: 116.1 m²
MEASUREMENTS ARE APPROXIMATE, ACTUAL MAY VARY





Alexander Hudson Estates
The Printworks
20 Arrow Close
NE12 6QN

0191 268 7433
sales@alexanderhudson.co.uk