



# Alexander Hudson Estates

---

Sales Particulars

# Alexander Hudson Estates

Whitecroft Road, West Moor, NE12



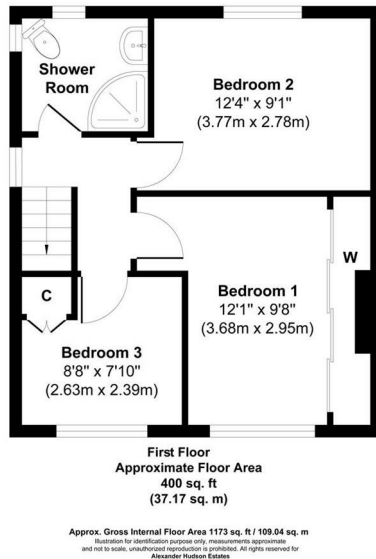
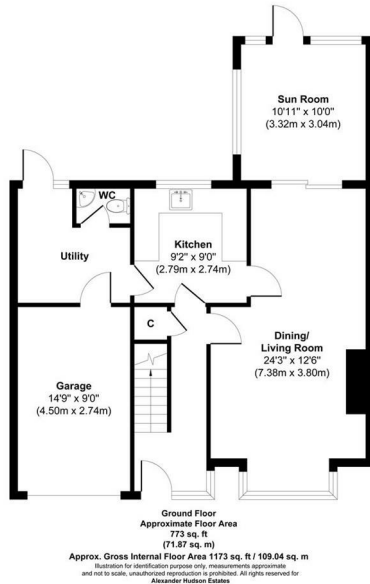
# The Property

Alexander Hudson Estates are pleased to introduce to market this well loved, three-bedroom, semi-detached family home situated in the popular residential area of West Moor, close-by to a range of local amenities, transport links and schooling.

The property has been extended to the ground floor and briefly comprises of an entrance hallway, open-plan living room and dining room, kitchen connecting to a utility and downstairs WC, sun room and integral garage. On the first floor lies a family bathroom and three bedrooms, two double and one single. At the front is a large paved driveway with space for multiple vehicle, whilst a large, mature, south facing garden sits at the rear.

Close to Gosforth, Balliol, and Quorum Business Parks, with the A1 and A19 easily accessible for those commuting further afield. West Moor is also adjacent to Killingworth, home to The Killingworth Centre (anchored by a large Morrison's supermarket), and the White Swan Centre, which includes a Doctors' surgery, activity hall, café and Killingworth Library. The Lakeside Centre offers up various leisure facilities including a swimming pool and soft play for children.

Freehold  
Council Tax: C  
EPC Rating: 65





---

Alexander Hudson Estates  
The Printworks  
20 Arrow Close  
NE12 6QN

0191 268 7433  
[sales@alexanderhudson.co.uk](mailto:sales@alexanderhudson.co.uk)