

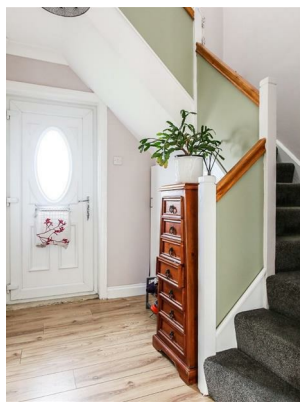


Alexander Hudson Estates

Sales Particulars

Alexander Hudson Estates

Farne Road, Palmersville, NE12

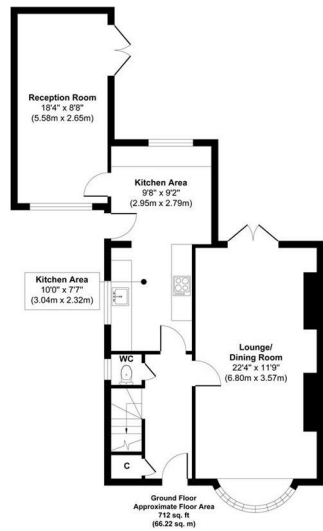


The Property

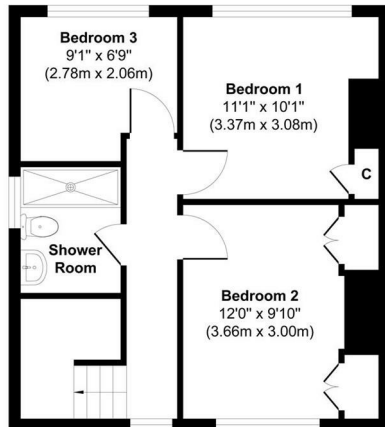
Alexander Hudson Estates introduces to market this bright and spacious, three bedroom, semi-detached family home with gardens in the popular residential area of Forest Hall, NE12.

Offering huge potential and recently updated throughout, the property briefly comprises of; entrance hallway, spacious living, dining room and kitchen with additional reception room overlooking the private landscaped garden. Three generously sized bedrooms and a family bathroom occupy the first floor. Externally, the front of the property benefits from a paved driveway providing ample off street and private parking. To the rear sits a well-maintained lawned garden with patio space.

The property is ideally located and within easy reach of Forest Hall High Street. The Killingworth Shopping Centre, White Swan Centre and The Lakeside Centre are also close-by along with both Killingworth Boating Lake with its bridleways and Lakeside Park offering idyllic settings. The property sits close to a bus route and metro station with links to Newcastle City Centre, Quorum, Balliol and Gosforth Business Parks; whilst the A19 is only a short drive away for trips further afield.



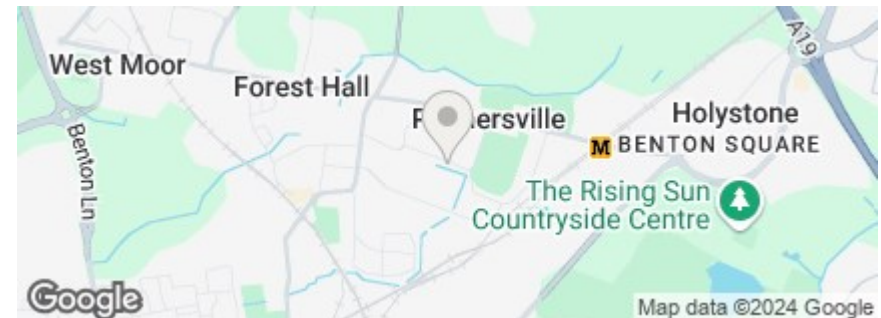
Approx. Gross Internal Floor Area 1154 sq. ft / 107.36 sq. m
Illustration for identification purposes only. Measurements approximate
and not to scale. Unauthorised reproduction is prohibited. All rights reserved for
Alexander Hudson Estates



First Floor
Approximate Floor Area
442 sq. ft.
(41.14 sq. m)

Approx. Gross Internal Floor Area 1154 sq. ft / 107.36 sq. m
Illustration for identification purposes only. Measurements approximate
and not to scale. Unauthorised reproduction is prohibited. All rights reserved for
Alexander Hudson Estates

Freehold
Council Tax: A
EPC Rating: 72





Alexander Hudson Estates
The Printworks
20 Arrow Close
NE12 6QN

0191 268 7433
sales@alexanderhudson.co.uk