



# Alexander Hudson Estates

---

Sales Particulars





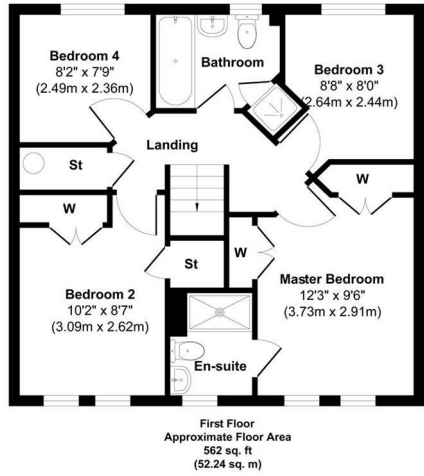


# The Property

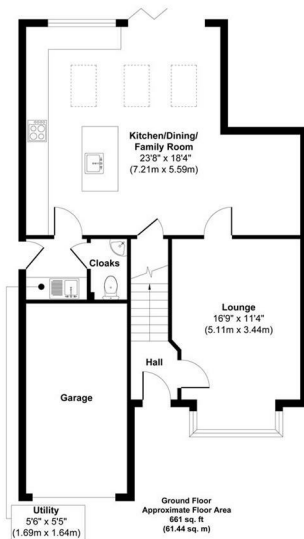
Alexander Hudson Estates introduces to market this extended, four-bedroom detached family home with rear garden in the popular residential area of Forest Gate, NE12. Close-by to a range of local amenities, transport links and schooling.

Beautifully presented throughout, comprising of an entrance hallway, living room, large, open-plan kitchen, diner, family room leading to utility and WC. On the first floor lies a family bathroom and four bedrooms; the master having an ensuite. A driveway sits at the front providing off-street parking whilst the rear garden offers a decking area and lawn.

The property lies just a 5-minute drive (or 15-minute walk) from a large Asda supermarket and is a similar distance from The Rising Sun Country Park, a green oasis of 162 hectares with ponds, woodlands and extensive grasslands, the site is an ideal place to relax and enjoy the great outdoors. Killingworth is only a 10 minute drive, offering another large supermarket, various high street shops and the Lakeside Leisure Centre which offers a swimming pool, indoor sports courts, a gym and a soft play for children. Palmersville Metro Station and the A19 offer ease of access across Newcastle and further afield.



Approx. Gross Internal Floor Area 1223 sq. ft / 113.68 sq. m  
Illustration for identification purposes only, measurements approximate and not to scale, unauthorised reproduction is prohibited. All rights reserved for Alexander Hudson Estates



Approx. Gross Internal Floor Area 1223 sq. ft / 113.68 sq. m  
Illustration for identification purposes only, measurements approximate and not to scale, unauthorised reproduction is prohibited. All rights reserved for Alexander Hudson Estates

Freehold  
Council Tax: D  
EPC Rating: null





---

Alexander Hudson Estates  
The Printworks  
20 Arrow Close  
NE12 6QN

0191 268 7433  
[sales@alexanderhudson.co.uk](mailto:sales@alexanderhudson.co.uk)