



# Alexander Hudson Estates

---

Sales Particulars

# Alexander Hudson Estates

Oxen Drive, East Benton Rise, NE28



# The Property

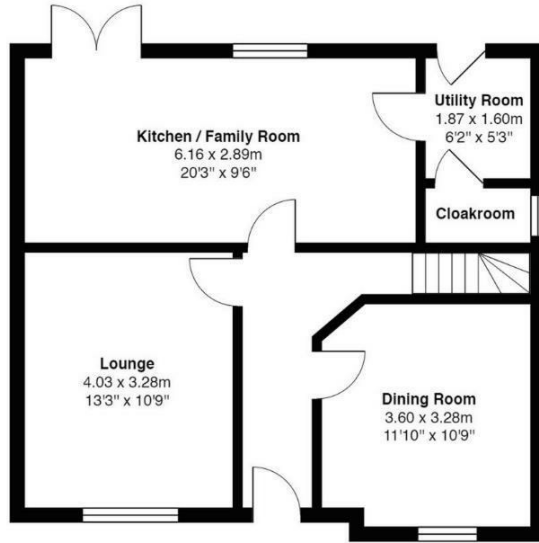
Alexander Hudson Estates is pleased to present this beautifully maintained four-bedroom detached family home, located in the sought-after residential area of East Benton Rise, NE28. Ideally positioned for access to both the coast and city, with excellent transport links connecting to wider areas.

The property boasts a bright and modern interior, comprising an inviting entrance hallway, a cosy living room, a versatile family room or formal dining area, and a spacious open-plan kitchen/diner with integrated appliances. Additional conveniences include a separate utility room and a downstairs WC.

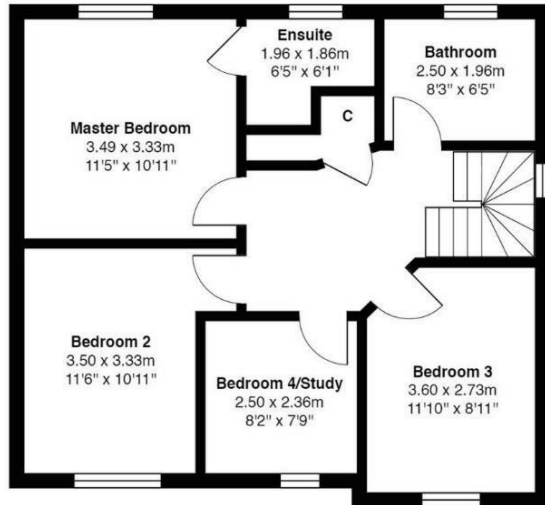
Upstairs, the first floor offers a family bathroom and four generously sized bedrooms, with the principal bedroom featuring a private ensuite. The rear garden is well-proportioned, with a combination of lawn and patio areas, perfect for outdoor relaxation or entertaining.

The home is within walking distance of local schools and amenities, while Benton offers a large supermarket, dining options, and shopping facilities. Silverlink Retail Park is less than a 10-minute drive away, providing further retail and leisure options.

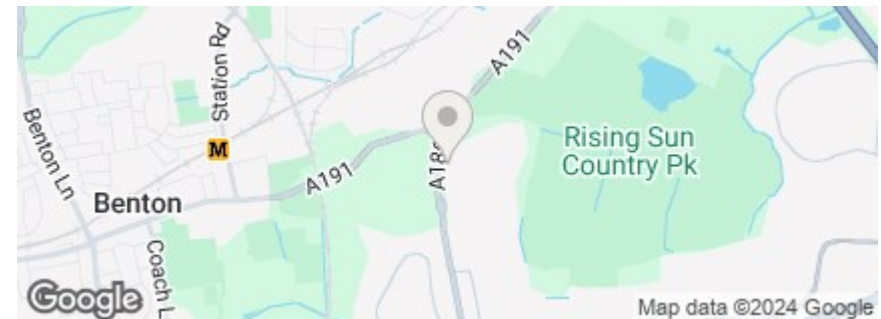
Freehold  
Council Tax: D  
EPC Rating: 78



Ground Floor



First Floor





---

Alexander Hudson Estates  
The Printworks  
20 Arrow Close  
NE12 6QN

0191 268 7433  
[sales@alexanderhudson.co.uk](mailto:sales@alexanderhudson.co.uk)