



Alexander Hudson Estates

Sales Particulars

Alexander Hudson Estates

Cranham Close, Ashdown Manor, NE12

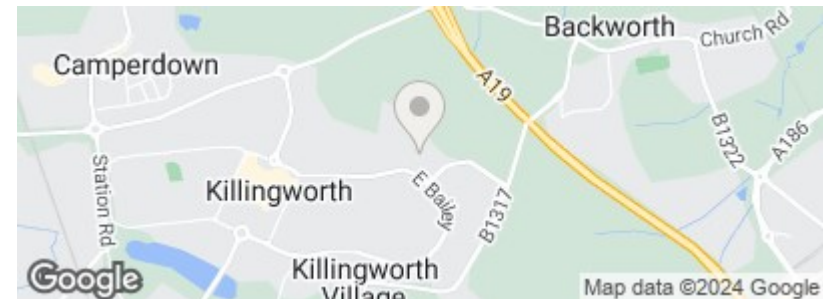
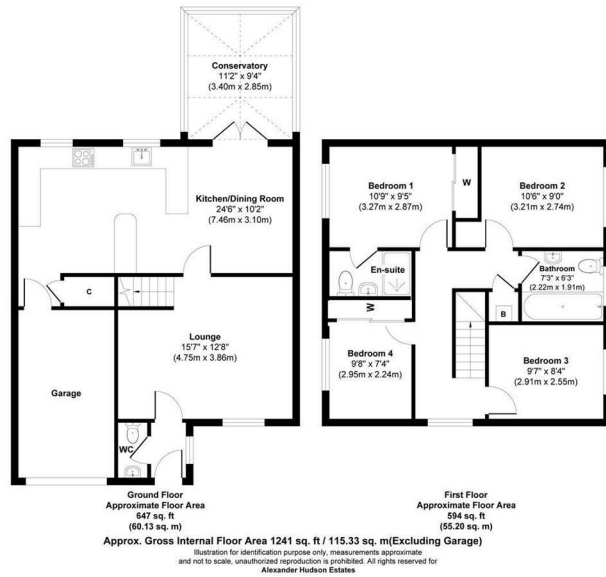


The Property

Alexander Hudson Estates introduces this immaculately presented, four bedroom, detached family home located in the popular suburb of Killingworth. Local amenities, schools and leisure facilities are all close-by including Killingworth Boating Lake & bridleways.

Comprising of an entrance hallway, downstairs WC, living room, dining kitchen and conservatory. On the first floor lies a family bathroom and four bedrooms, the primary benefiting from an en-suite. To the front of the property is a private driveway offering off street parking and access to the single integral garage whilst at the rear is a landscaped garden with lawn, planted borders and patio area.

The property is well located, being a ten-minute walk to the local shopping centre, which includes various shops and eateries. A leisure centre is a further five-minute walk, providing a swimming pool, indoor sports courts, and a gym. A local bus route sits only a few minutes walk from the property offering easy access to Newcastle City Centre and North Tyneside whilst local primary and secondary schools are also within walking distance.





Alexander Hudson Estates
The Printworks
20 Arrow Close
NE12 6QN

0191 268 7433
sales@alexanderhudson.co.uk