



# Alexander Hudson Estates

---

Sales Particulars

White Swan Close

Killingworth

NE12 6UG

YOUR MIND  
IS A POWERFUL  
THING. WHEN YOU  
FILL IT WITH  
POSITIVE THOUGHTS  
YOUR LIFE WILL  
START TO  
CHANGE





Alexander Hudson Estates introduces this beautifully presented two-bedroom, two bathroom, first floor apartment situated in the increasingly popular suburb of Killingworth. Close by to George Stephenson High School and the White Swan Centre which has a range of amenities including a GP surgery, activity hall and café.

Bright and spacious throughout, the property benefits from allocated parking. Internally, the property briefly comprises of an entrance hall, modern bathroom, open plan living room/kitchen and two bedrooms, the primary benefitting from an en-suite shower room. The apartment offers a pleasant view towards Killingworth Lake.

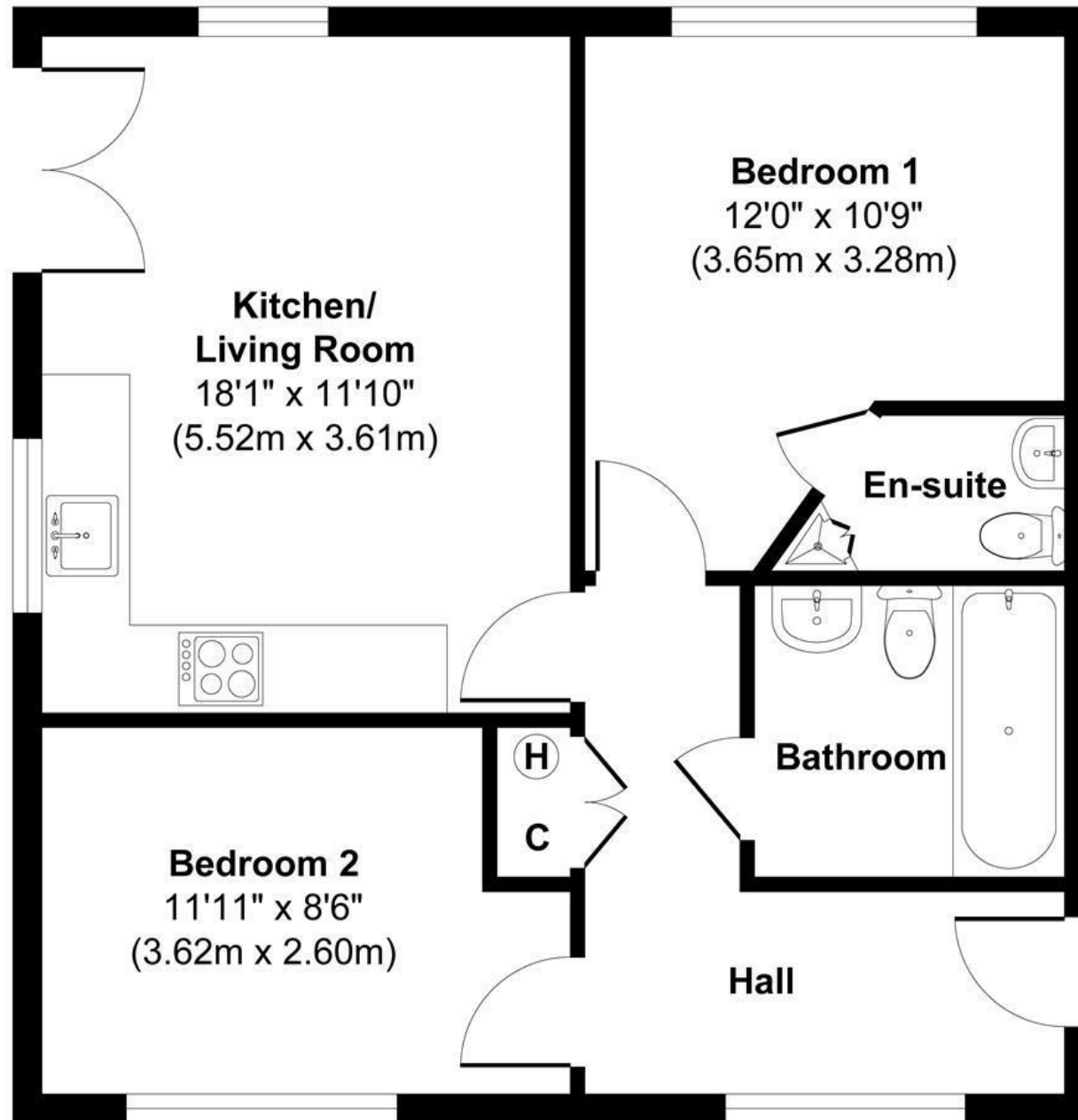
The property is ideally located, within easy walking distance to both the Lakeside Centre and The Killingworth Centre, which offers a range of leisure facilities and shops including a large supermarket and eateries. Excellent transport links are also nearby with a main bus route providing access to Newcastle City Centre. The A1 and A19 are also close-by for trips to the coast and further afield.











**Approx. Gross Internal Floor Area 543 sq. ft / 50.46 sq. m**

Illustration for identification purpose only, measurements approximate  
and not to scale, unauthorized reproduction is prohibited. All rights reserved for  
**Alexander Hudson Estates**