



# Alexander Hudson Estates

---

Sales Particulars

Miller Close

Palmersville

NE12 9ER





Alexander Hudson Estates introduces to market this four bedroom, detached family home with spacious rear garden situated in a popular residential area of Palmersville. Close-by to a range of local amenities, transport links and within the catchment area of the very popular Holystone Primary School which has been rated Outstanding by Ofsted.

Briefly comprising of: entrance hallway with cloakroom WC, kitchen, dining room, and spacious living room with access to the large rear garden. To the first floor, four bedrooms, the principle bedroom with en-suite as well as separate family bathroom. Externally, a large private driveway as well as spacious rear garden offering a place to relax and unwind.

The property lies just a 5-minute drive (or 15-minute walk) from a large Asda supermarket and is a similar distance from The Rising Sun Country Park, a green oasis of 162 hectares. With ponds, woodlands and extensive grasslands, the site is an ideal place to relax and enjoy the great outdoors. Killingworth Shopping Centre is also only a 10 minute drive, offering another large supermarket and various high street shops; whilst The Lakeside Centre is also close by, a leisure centre which offers a swimming pool, indoor sports courts, a gym and a soft play for children. Palmersville Metro Station and the A19 offer ease of access across Newcastle and further afield.

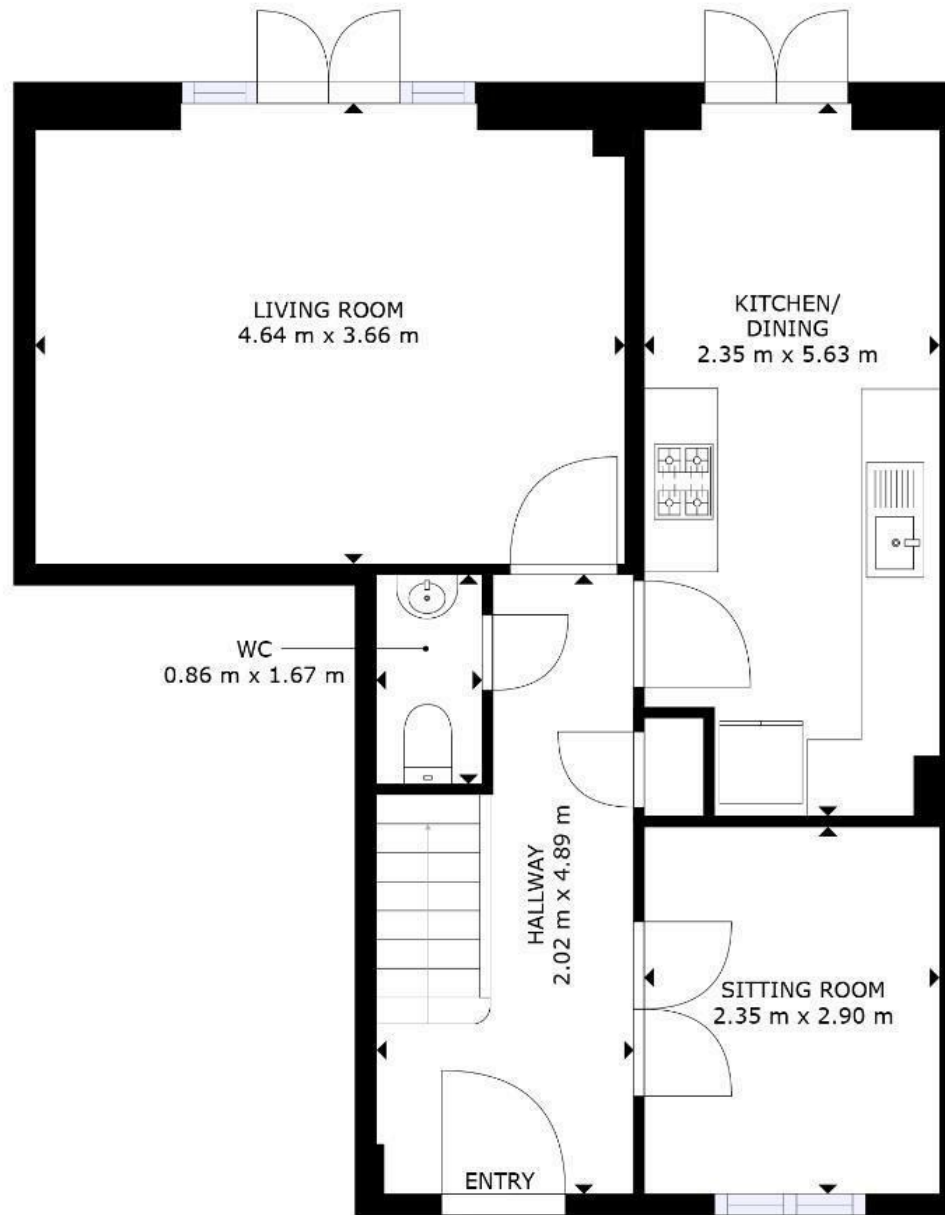


Tenure: Freehold   Council tax band: D   EPC Rating: C









1ST FLOOR

GROSS INTERNAL AREA  
1ST FLOOR: 48 m<sup>2</sup>, 2ND FLOOR: 60 m<sup>2</sup>  
TOTAL: 108 m<sup>2</sup>  
SIZES AND DIMENSIONS ARE APPROXIMATE, ACTUAL MAY VARY.

