



Alexander Hudson Estates

Sales Particulars

Ashleigh Grove

West Jesmond

NE2 3DJ





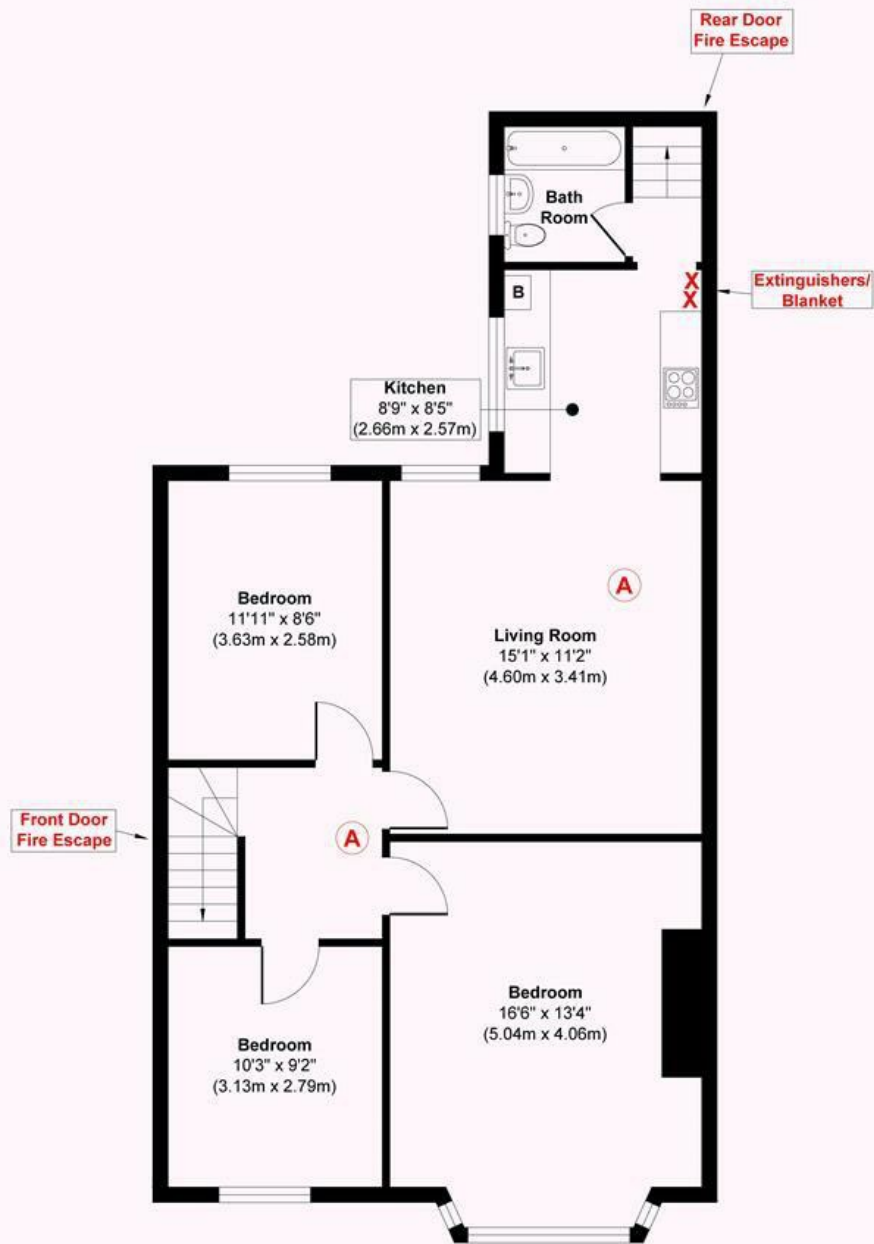
Alexander Hudson Estates welcome to the market, this well presented, three bedroom, first floor flat with private rear yard in the thriving suburb of West Jesmond. Located next to West Jesmond Metro station and Brentwood Avenue Cafes & eateries as well as within easy walking distance to the city centre and both universities make this a great opportunity to live in one of Newcastle's most popular residential areas. The property itself is offered to the market fully furnished is to be redecorated throughout and will be available September 2024.



Tenure: Council tax band: EPC Rating: D







Floor Plan
 Approximate Floor Area
 829 sq. ft
 (77.02 sq. m)

Approx. Gross Internal Floor Area 892 sq. ft / 77.02 sq. m

Produced by Elements Property