



Alexander Hudson Estates

Sales Particulars

Oakfield Terrace

Forest Hall

NE12 9DN





Alexander Hudson Estates introduces to the market this newly refurbished five-bedroom, mid-terrace family home situated in the popular residential area of Forest Hall, NE12.

Stylishly presented and neutrally decorated throughout, the property features an entrance hallway, downstairs WC, living room and an extended kitchen/ dining room. Three generously sized bedrooms, two of which benefit from en-suite shower rooms occupy the first floor. Whilst a further two bedrooms and bathroom are located on the second. Externally the property benefits from a well presented front garden with private driveway whilst a sunny courtyard sits to the rear.

The property is ideally located and within walking distance to Forest Hall High Street which offers a range of amenities. The Killingworth Shopping Centre, White Swan Centre and The Lakeside Centre are all close-by along with both Killingworth Boating Lake with its bridleways and Lakeside Park offering idyllic settings. The property sits close to a bus route and metro station with links to Newcastle City Centre, Quorum, Balliol and Gosforth Business Parks; whilst the A19 is only a short drive away for trips further afield.

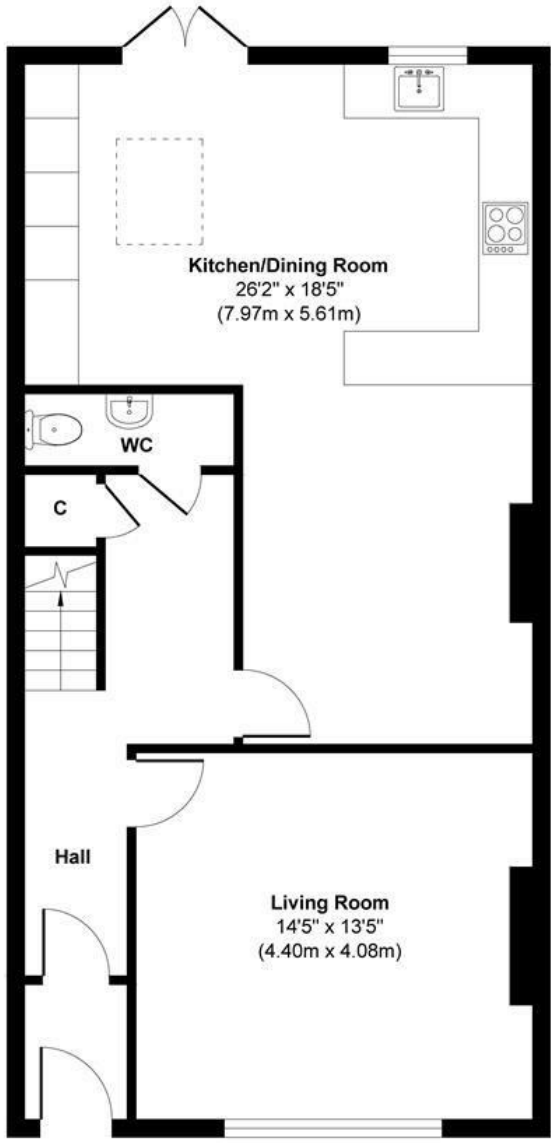


Tenure: Freehold Council tax band: B EPC Rating: C

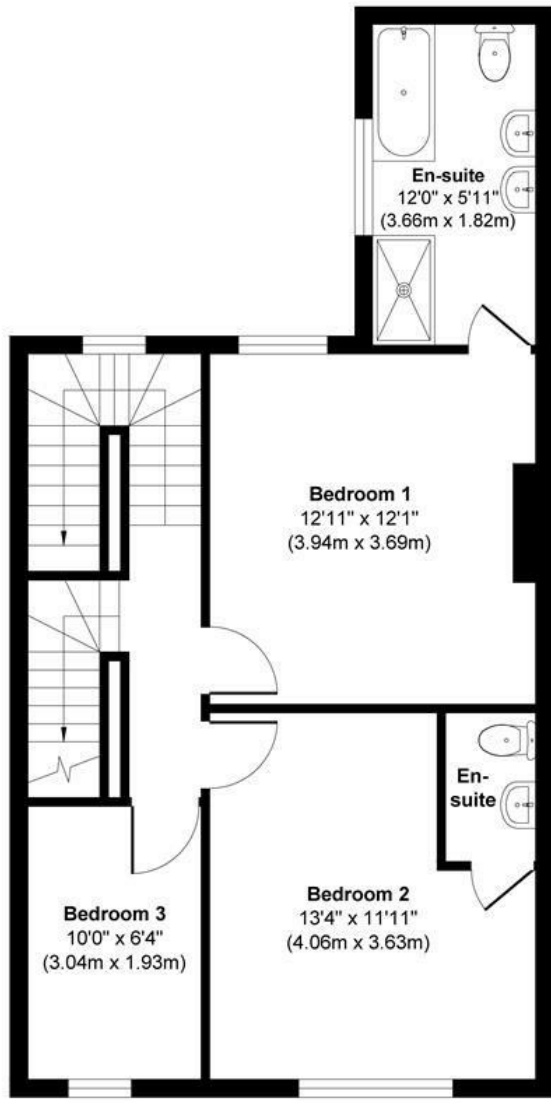




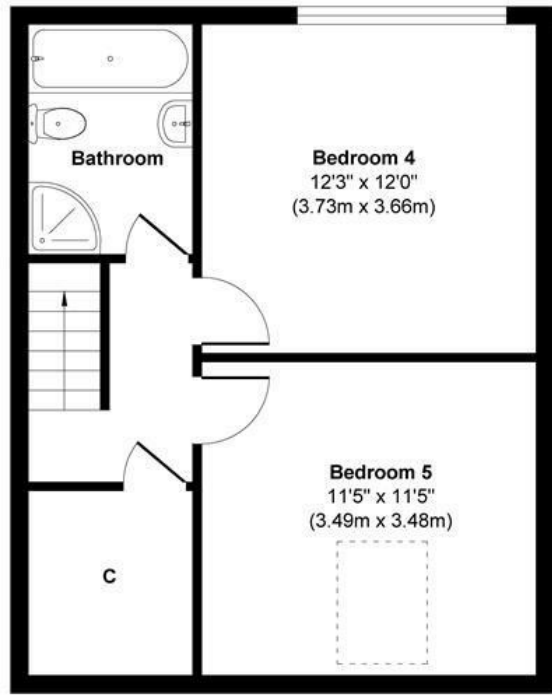




Ground Floor
 Approximate Floor Area
 716 sq. ft
 (66.50 sq. m)



First Floor
 Approximate Floor Area
 564 sq. ft
 (52.39 sq. m)



Second Floor
 Approximate Floor Area
 442 sq. ft
 (41.03 sq. m)

Approx. Gross Internal Floor Area 1722 sq. ft / 159.92 sq. m
 Illustration for identification purpose only, measurements approximate
 and not to scale, unauthorized reproduction is prohibited. All rights reserved for
 Alexander Hudson Estates