



Alexander Hudson Estates

Sales Particulars

Park Terrace

West Moor

NE12 7EN





Alexander Hudson Estates introduce this recently redecorated, generously sized and well-presented upper floor Tyneside flat located within the increasingly popular residential area of West Moor, NE12. Beginning life as a small rural village, West Moor is now a highly sought-after residential suburb of Newcastle upon Tyne. With local shops, a public house and local primary school. West Moor offers a great location for families. It is close to Gosforth, Balliol and Quorum Business Parks, with the A1 and A19 easily accessible for those commuting further afield. Briefly comprising of; entrance hallway and staircase leading up to the main living quarters, spacious living room, modern galley kitchen, family bathroom, extremely well proportioned double bedroom and office. Externally to the front of the property is shared front garden and to the rear, an enclosed private terrace yard.

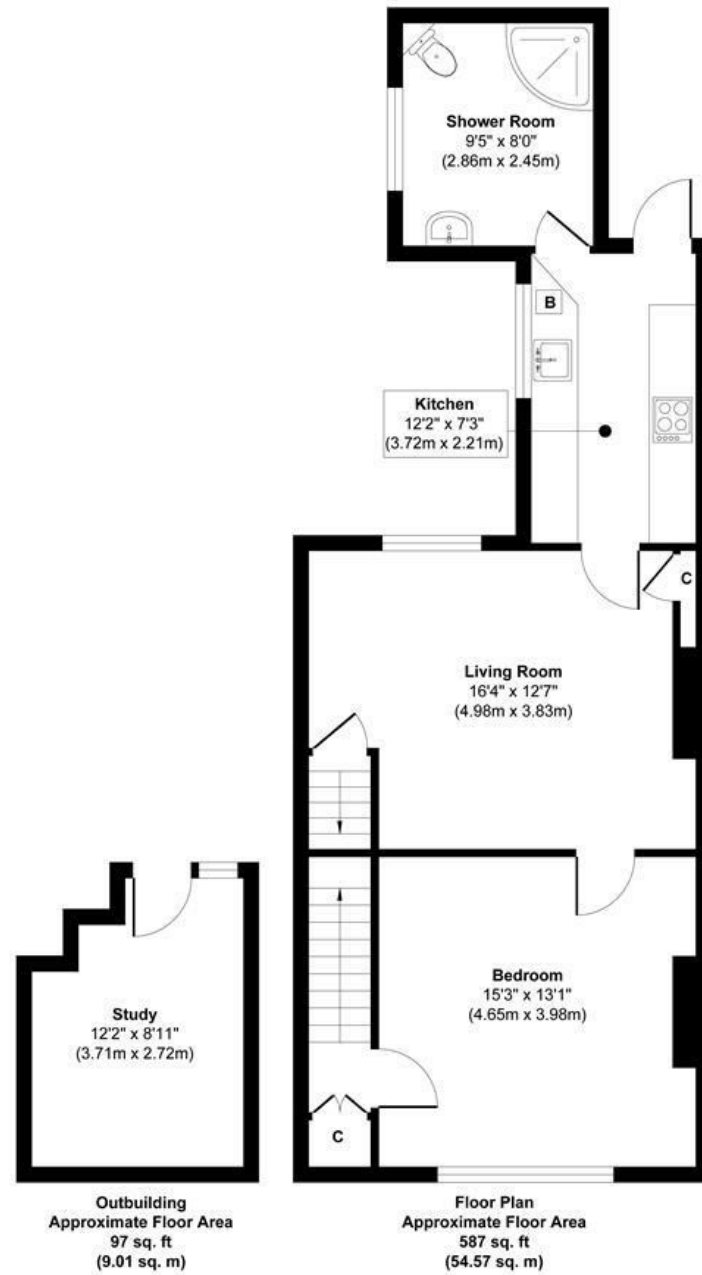


Tenure: Leasehold Council tax band: A EPC Rating:









Approx. Gross Internal Floor Area 684 sq. ft / 63.58 sq. m

Illustration for identification purpose only, measurements approximate and not to scale, unauthorized reproduction is prohibited. All rights reserved for **Alexander Hudson Estates**