



Alexander Hudson Estates

Sales Particulars

Stone View

Holystone

NE27 0JB





Alexander Hudson Estates introduces to market this four bedroom, detached family home located within the increasingly popular area of Holystone, NE27.

Well presented and maintained throughout, this property comprises of an entrance hallway, downstairs WC, living room and a sunny open plan kitchen/ dining room. A family bathroom and four generously sized bedrooms, the primary of which benefits from an En-suite shower room occupy the first floor. Externally, the property boasts well maintained front and rear gardens and a private driveway provides ample off street parking and access to the attached single garage.

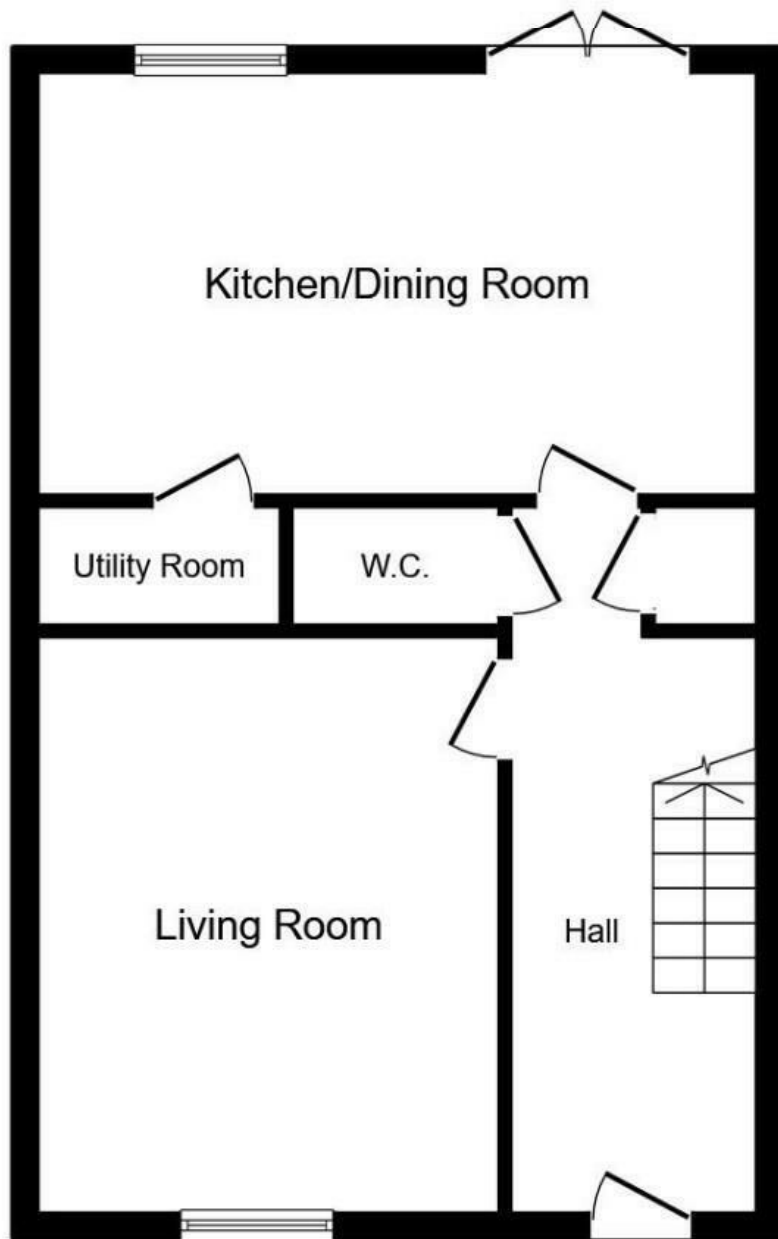
The property is situated in a beautiful leafy location and is within walking distance to The Rising Sun Country Park, a green oasis of 162 hectares with ponds, woodlands, and extensive grasslands, providing the ideal place to relax and enjoy the great outdoors. Silverlink Retail Park is located just a short drive away, providing a range of amenities, restaurants and leisure facilities including a cinema. Holystone Primary School (Ofsted-rated Outstanding) and Backworth Park Primary School (Ofsted-rated Good) are both within walking distance, along with excellent transport links including Northumberland Park Metro (7 minute walk), A19 and A1 providing ease of access across Newcastle, the coast and Northumberland countryside.



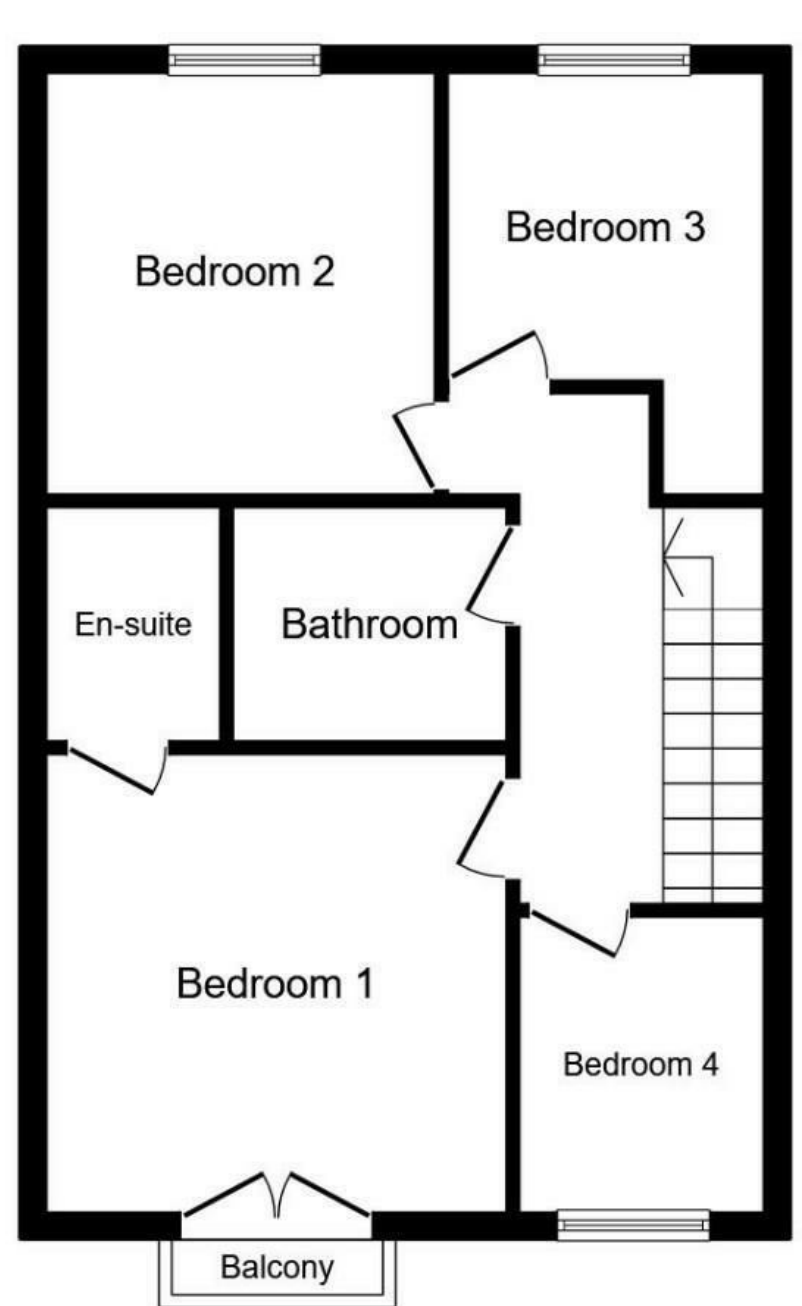








Ground Floor



First Floor

Total floor area 100.2 m² (1,078 sq.ft.) approx

This plan is for illustration purposes only and may not be representative of the property. Plan not to scale. Powered by PropertyBox