



Alexander Hudson Estates

Sales Particulars

Wharry Court

Manor Park

NE7 7FT





Alexander Hudson Estates are pleased to introduce to the market this spacious and well presented, two bedroom, first floor apartment in the popular development of Manor Park, Heaton.

Bright and spacious throughout, the property benefits from allocated parking, secure gated residents entry system and lift access. Internally, the property briefly comprises of a spacious entrance hall, bathroom, spacious living/ dining room and kitchen and two bedrooms, the primary benefitting from an En-suite shower room.

The property is ideally situated off Benton Road, it is within easy reach of the City Centre and Coast as well as being within walking distance of The Freeman Hospital, The Ministry as well as local super markets, shops, restaurants and cafes.

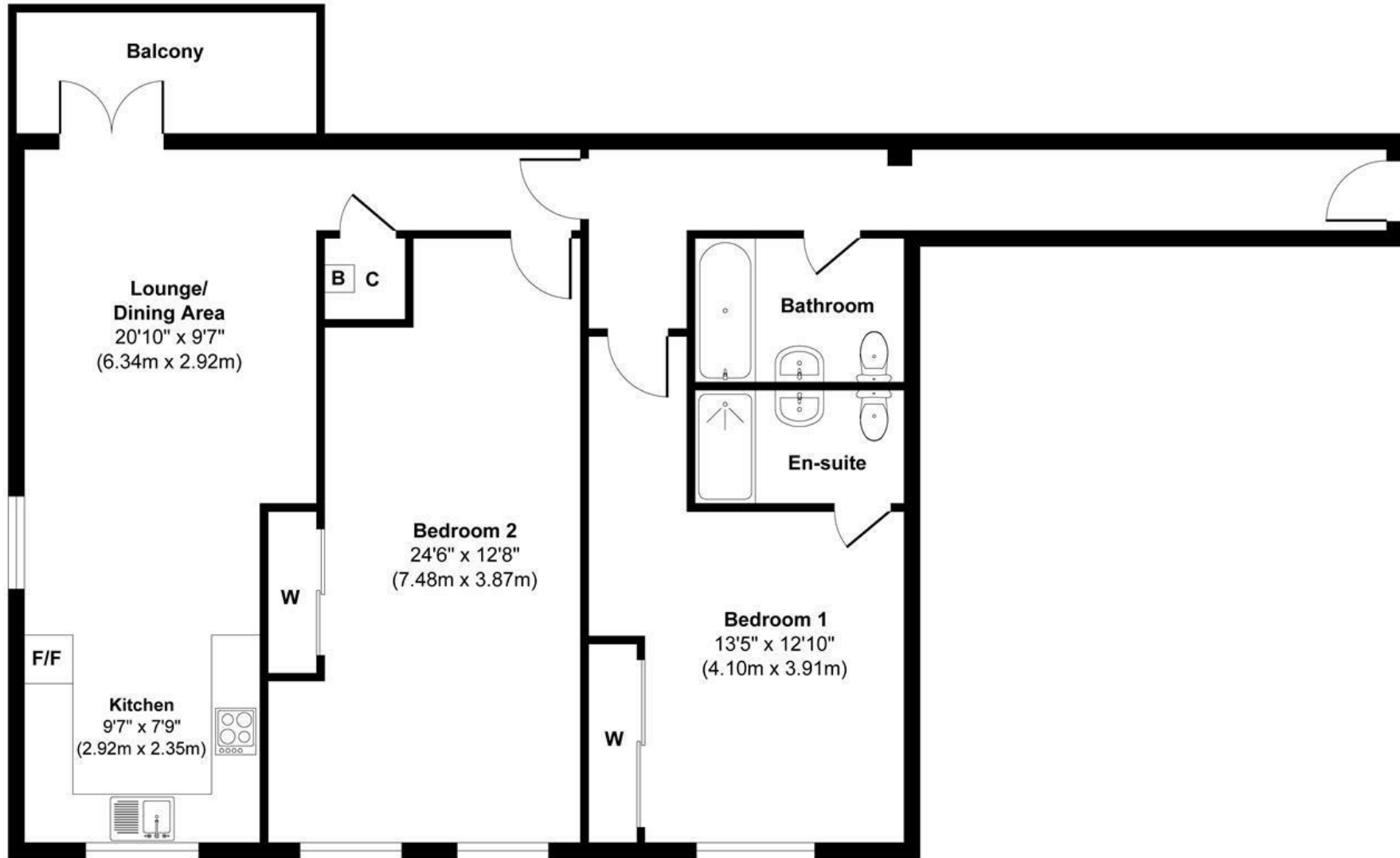


Tenure: Leasehold Council tax band: B EPC Rating: B









Floor Plan
Approximate Floor Area
1,071 sq. ft
(99.50 sq. m)

Approx. Gross Internal Floor Area 1,071 sq. ft / 99.50 sq. m
Illustration for identification purpose only, measurements approximate
and not to scale, unauthorized reproduction is prohibited. All rights reserved for
Alexander Hudson Estates