



Alexander Hudson Estates

Sales Particulars

Windmill Court

Moorfields

NE12 7BG





Alexander Hudson Estates are please to welcome to the market this beautifully presented corner plot, four bedroom, detached family home. Located in the increasingly popular Moorfields Estate, close by to a range of amenities, schooling and transport links.

Boasting tasteful décor throughout, the property briefly comprises of an entrance hallway, living room, downstairs WC, utility room and an open plan kitchen, dining room and family room with bifold doors leading to a sunny rear garden. Four bedrooms, two benefiting from En-suite shower rooms and a family bathroom occupy the first floor.

Externally, the front of the property is equally as well presented, featuring planted borders, garden lawn and a paved private driveway which provides off street parking for multiple vehicles and access to the integral single garage. A spacious South facing garden with patio area and garden lawn is situated to the rear.

Close to local schools, bridleways, parks and Miller & Carter restaurant and bar, this represents a brilliant opportunity to purchase a family home close to amenities and within easy reach of both the City & Coast. Ideal location for commuting to Newcastle city centre, the various office parks at Gosforth, Cobalt and Quorum along with easy access to key transport routes across the city and beyond.

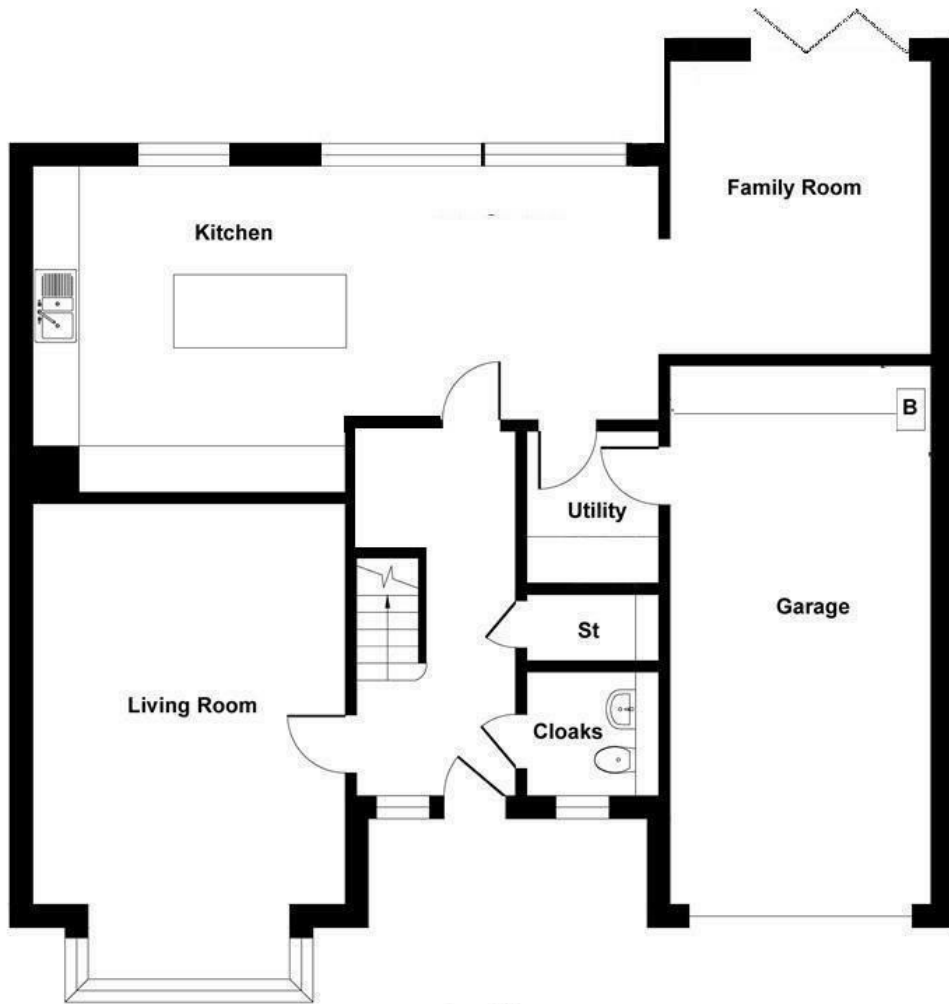


Tenure: Freehold Council tax band: F EPC Rating: B

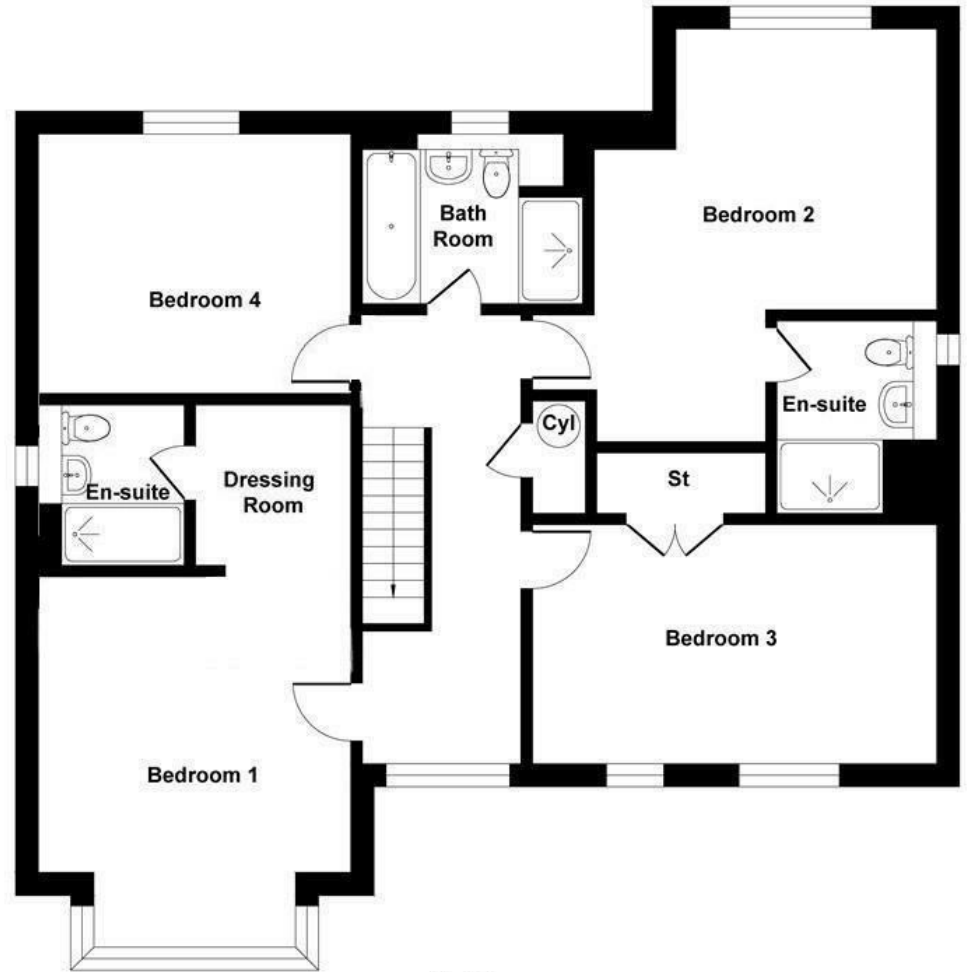








Ground Floor



First Floor