



Alexander Hudson Estates

Sales Particulars

Rosebury Drive

Longbenton

NE12 8RG

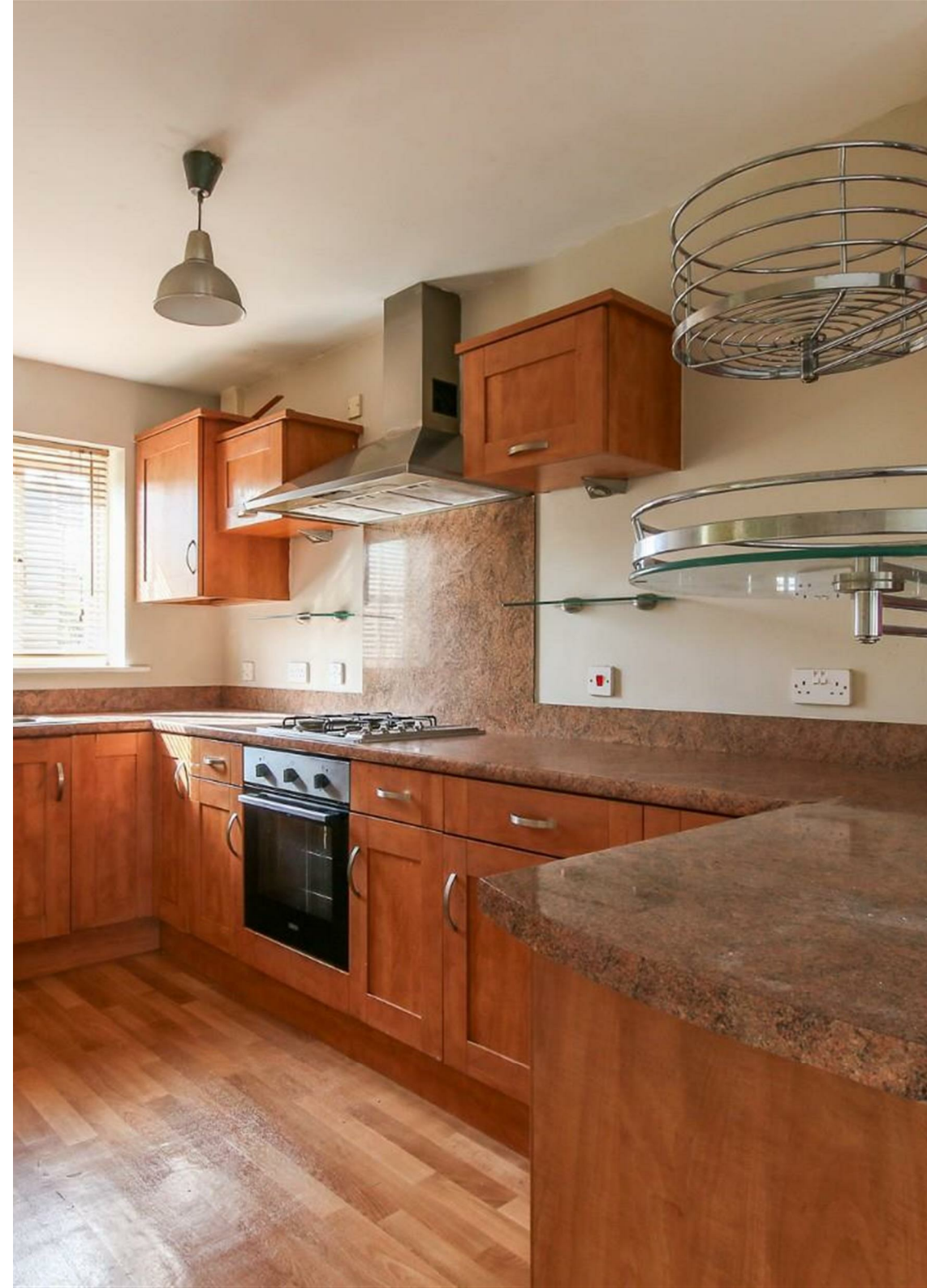




Alexander Hudson Estates are excited to introduce to market this well presented, two bedroom, mid- terraced family home, situated within the increasingly popular area of Longbenton, close to local amenities, schooling and transport links.

Offered with no onward chain, the property briefly compromises of entrance hallway, downstairs WC, open plan kitchen/ living room with French-style doors leading out to the sunny rear garden. To the first floor lie two double bedrooms, both with ensuite bathrooms. Externally, the front of the property compromises of a small lawn and garden path. The rear features a patio area, lawn and garden path which leads to the private parking space.

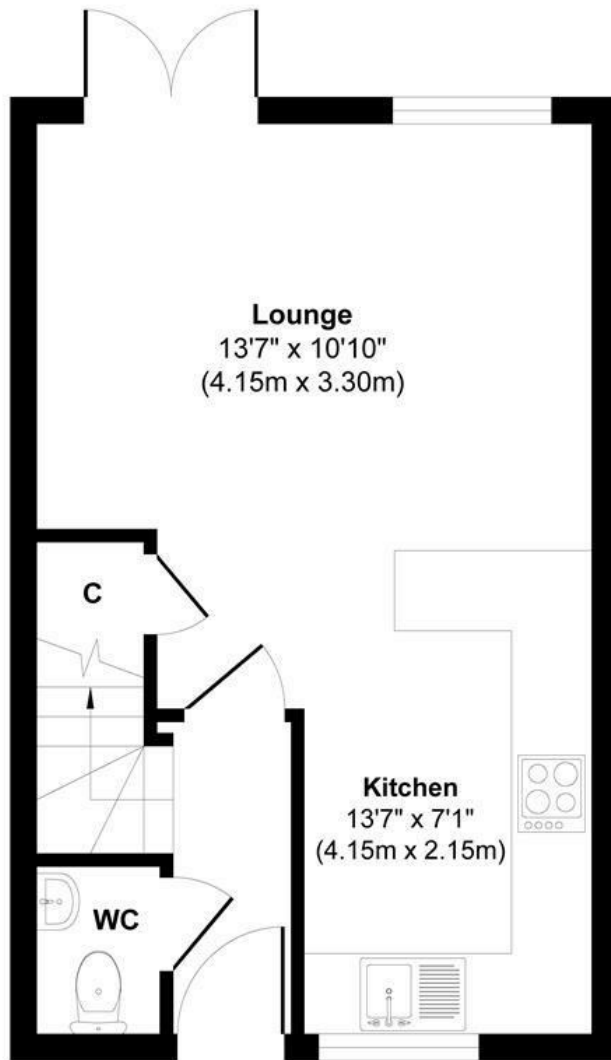
Close-by to Longbenton Metro Station, this property sits in a prime location for travelling across the city, and benefits from having schools and a range of local amenities such as shops, pubs and restaurants all within walking distance. Four large parks including Tyneview Park are all within a one-mile radius of the property, offering up plenty of scenic walking routes and open green space.



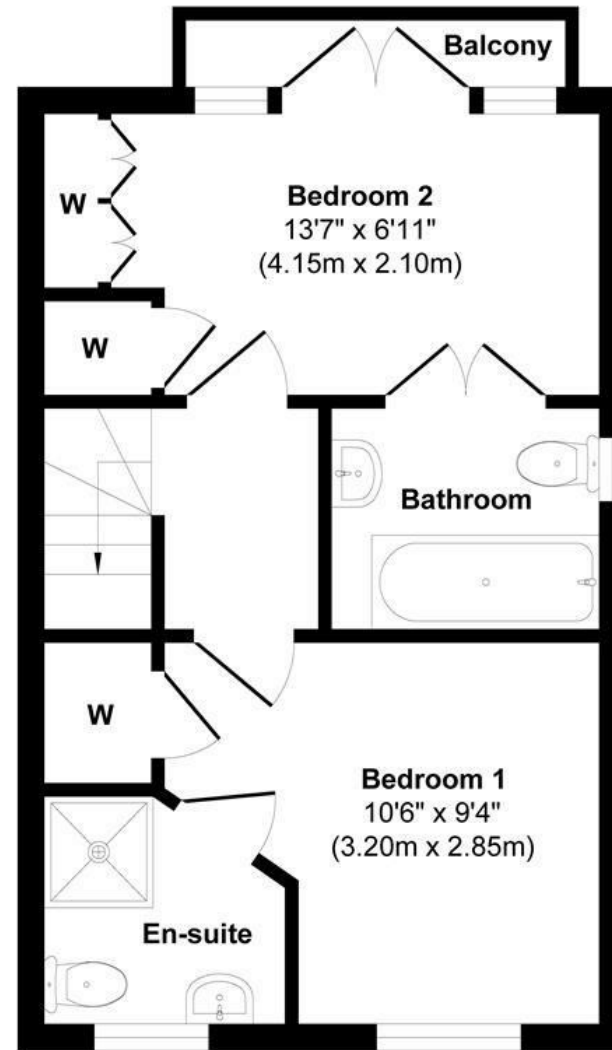








Ground Floor
Approximate Floor Area
337 sq. ft
(31.30 sq. m)



First Floor
Approximate Floor Area
337 sq. ft
(31.30 sq. m)

Approx. Gross Internal Floor Area 674 sq. ft / 62.61 sq. m

Illustration for identification purpose only, measurements approximate and not to scale, unauthorized reproduction is prohibited. All rights reserved for Alexander Hudson Estates