



Alexander Hudson Estates

Sales Particulars

Alexander Hudson Estates

Beaumont Drive, Fallow Park, NE28

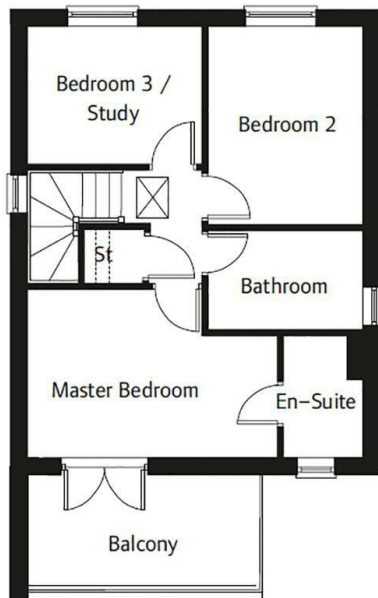
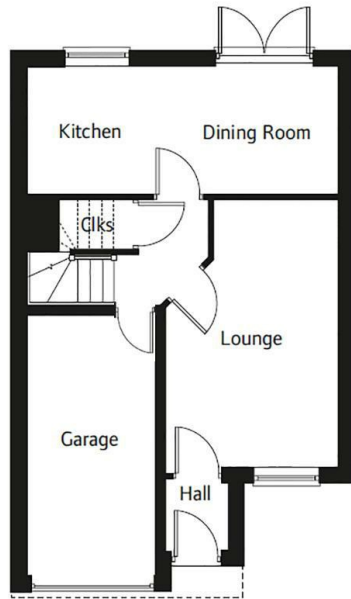


The Property

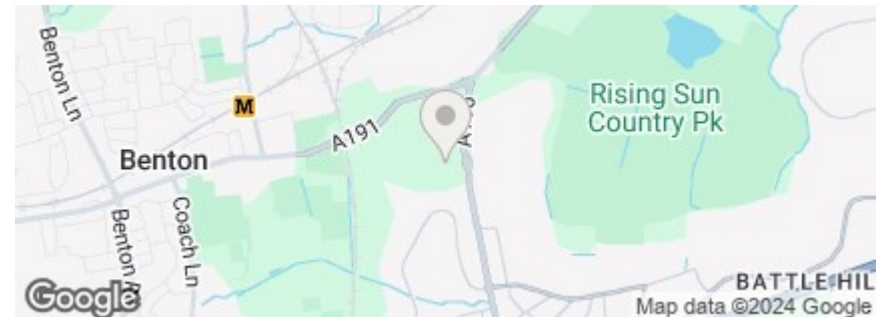
Alexander Hudson Estates introduces to market this immaculately presented, three-bedroom, detached family home situated in the popular residential estate of East Benton Rise, NE28. Close by to the Coast Road and A19, providing easy access across Newcastle and further afield.

Well presented and maintained throughout, the property briefly comprises of an entrance hallway, open-plan kitchen/ dining room and a cosy living room. To the first floor sits the family bathroom and three generously sized bedrooms with the primary bedroom benefitting from an En-suite shower room and sunny balcony. Externally, the front of the property features a garden lawn and driveway which provides off street parking and access to the integral garage. A sunny lawned garden with patio area sits to the rear.

The property is within walking distance to a range of schooling, and within easy reach of Benton providing a range of amenities including a large supermarket, restaurants and shopping facilities, with Silverlink Retail Park less than a 10-minute drive away.



Freehold
Council Tax: C
EPC Rating: 82





Alexander Hudson Estates
The Printworks
20 Arrow Close
NE12 6QN

0191 268 7433
sales@alexanderhudson.co.uk