



Alexander Hudson Estates

Sales Particulars

Northfield Drive

West Moor

NE12 7ED





Alexander Hudson Estates are pleased to introduce to market this immaculately presented and extended, four bedroom, semi-detached family home. Situated in a sought-after area, this property represents a fantastic opportunity to acquire a family home within catchment of Ofsted outstanding schools.

Modernised to a high standard, the property comprises of an entrance hallway, cosy living room, open plan family room with kitchen, dining room and snug, separate utility room and downstairs WC. To the first floor sits a modern family bathroom and four generously sized bedrooms, the primary benefitting from an En-suite shower room. Externally, the front of the property features an extended paved driveway which provides ample off street parking and access to the attached garage. A spacious lawned garden with multiple patios areas and planted borders sits to the rear.

The property is close to Gosforth, Balliol, and Quorum Business Parks, with the A1 and A19 easily accessible for those commuting further afield. West Moor is also adjacent to Killingworth, home to The Killingworth Centre (anchored by a large Morrison's supermarket), and the White Swan Centre, which includes a Doctors' surgery, activity hall, café and Killingworth Library. The Lakeside Centre offers up various leisure facilities including a swimming pool and soft play for children.

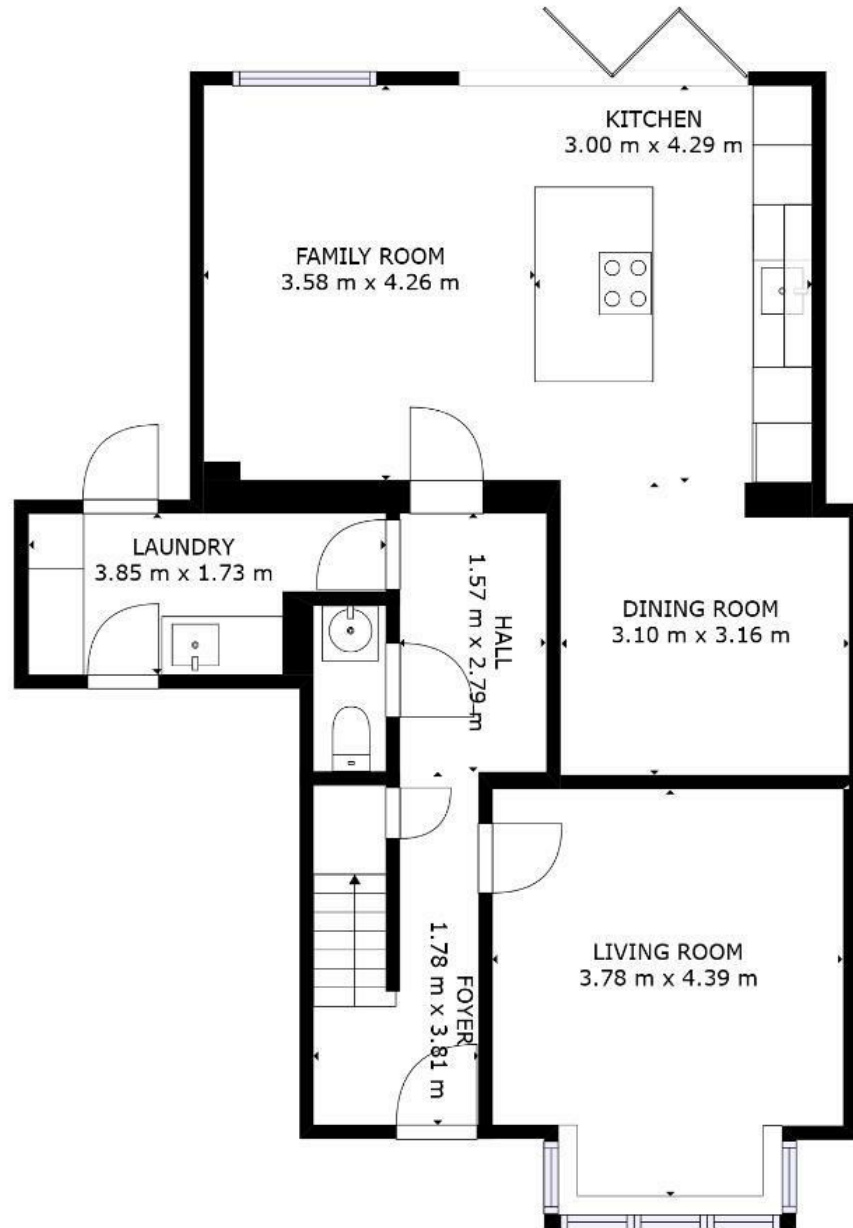


Tenure: Freehold Council tax band: C EPC Rating: D









TOTAL: 136 m²

FLOOR 1: 76 m², FLOOR 2: 60 m²

SIZES AND DIMENSIONS ARE APPROXIMATE, ACTUAL MAY VARY.