



Alexander Hudson Estates

Sales Particulars

Myrtle Crescent

Forest Hall

NE12 7ND

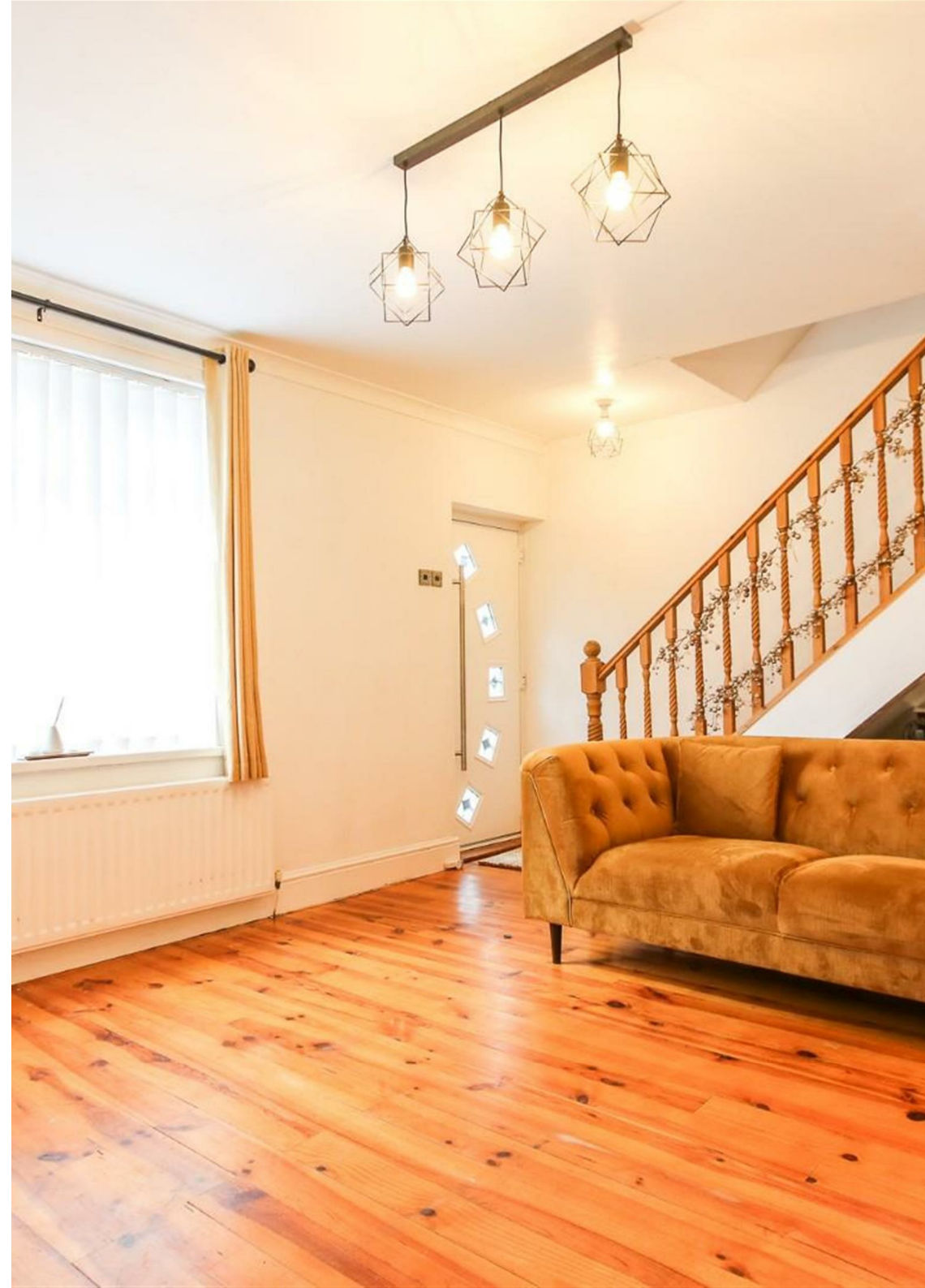




Alexander Hudson Estates are delighted to welcome to the rental market this well presented, two bedroom, two bathroom mid-terrace family home in the heart of Forest Hall, NE12.

The property is offered to the market on an unfurnished basis and available immediately.

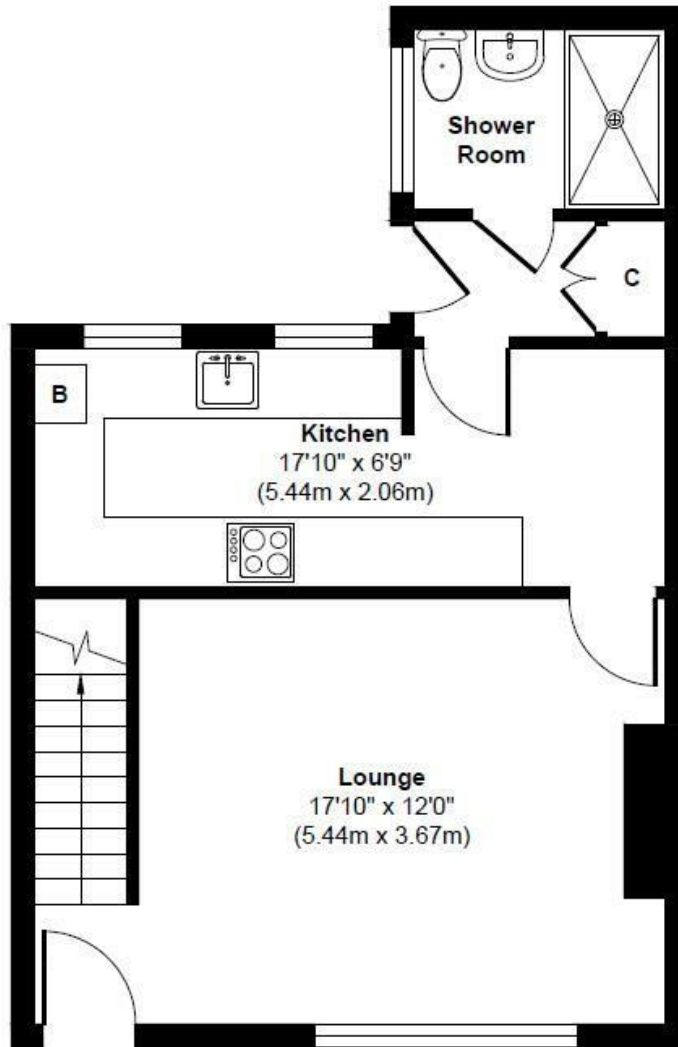
Tenure: Council tax band: A EPC Rating:



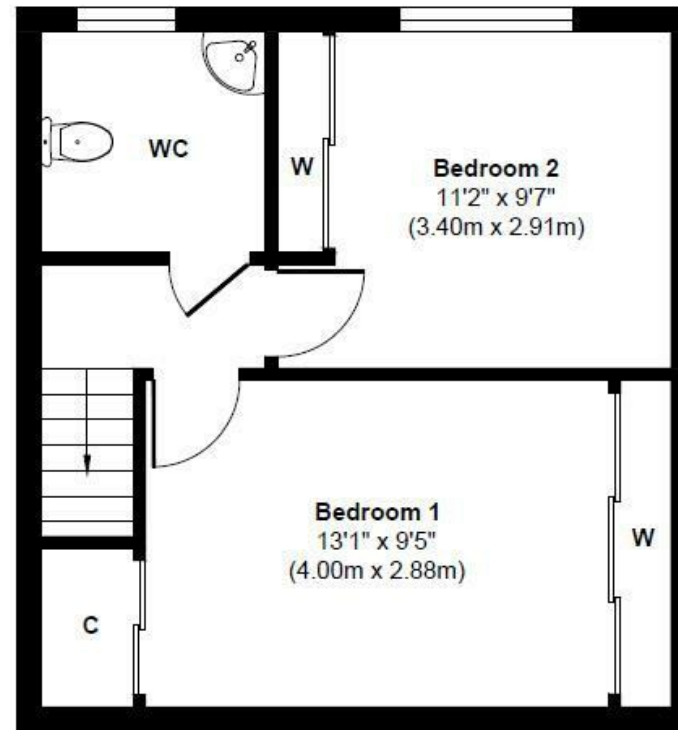








Ground Floor
 Approximate Floor Area
 406 sq. ft
 (37.68 sq. m)



First Floor
 Approximate Floor Area
 341 sq. ft
 (31.71 sq. m)

Approx. Gross Internal Floor Area 747 sq. ft / 69.39 sq. m

Illustration for identification purpose only, measurements approximate and not to scale, unauthorized reproduction is prohibited. All rights reserved for Alexander Hudson Estates