



Alexander Hudson Estates

Sales Particulars

Forest Gate

Palmersville

NE12 9EN





Alexander Hudson Estates introduces to market this stunning, four-bedroom detached family home with spacious rear garden in the popular residential area of Forest Gate, NE12.

Immaculately presented and maintained throughout, the property briefly comprises of an entrance hallway, downstairs WC, dining room/ playroom, open-plan kitchen diner and family room leading to a separate utility room. On the first floor lies four generously sized bedrooms with the master benefiting from an En-suite shower room and a separate family bathroom. A low maintenance pebble garden and large driveway sits at the front of the property providing off-street parking and access to the double garage whilst a spacious, landscaped rear garden with artificial lawn and multiple seating areas can be found at the rear.

The property lies just a 5-minute drive (or 15-minute walk) from a large Asda supermarket and is a similar distance from The Rising Sun Country Park, a green oasis of 162 hectares. With ponds, woodlands and extensive grasslands, the site is an ideal place to relax and enjoy the great outdoors. Killingworth Shopping Centre is also only a 10 minute drive, offering another large supermarket and various high street shops; whilst The Lakeside Centre is also close by, a leisure centre which offers a swimming pool, indoor sports courts, a gym and a soft play for children. Palmersville Metro Station and the A19 offer ease of access across Newcastle and further afield.

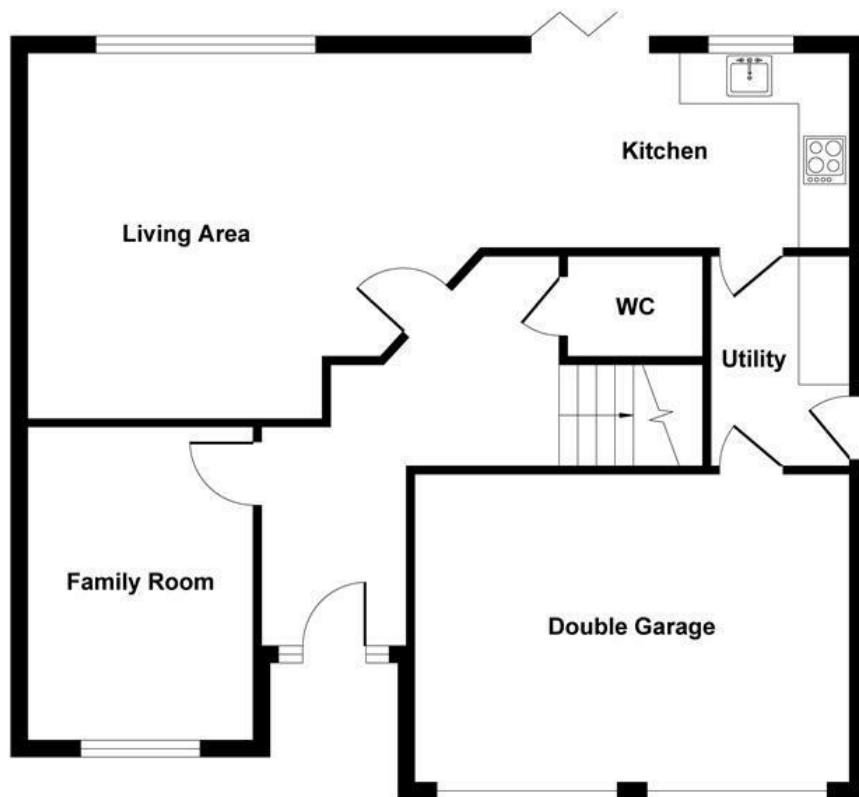
Tenure: Freehold Council tax band: E EPC Rating: C



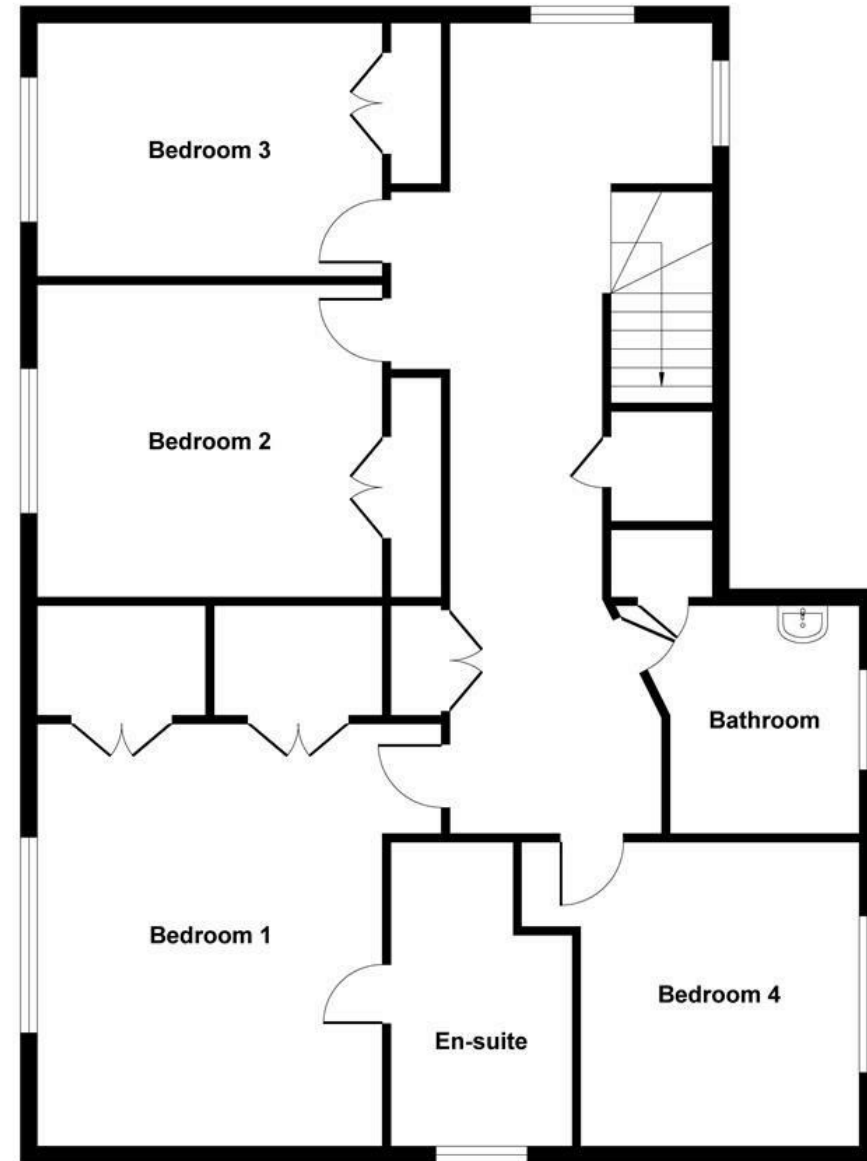








Ground Floor



First Floor

Illustration for identification purposes only, measurements approximate and not to scale, unauthorized reproduction is prohibited. All rights reserved for **Alexander Hudson Estates**