



Alexander Hudson Estates

Sales Particulars

Shepherd Court

Moorfields

NE12 7AZ





Alexander Hudson Estates are pleased to welcome to the market this immaculately presented, three-bedroom, detached family home with driveway and detached garage in the increasingly popular residential development of Moorfields.

Bright and spacious throughout, comprising of an entrance hallway, living room, downstairs WC, and an open-plan kitchen diner. On the first floor lies a family bathroom and three generously sized bedrooms with the primary benefiting from an En-suite shower room. Externally, the front of the property benefits from a well maintained garden with private driveway providing ample off street parking for multiple vehicles and a detached garage. At the rear is a sunny and landscaped garden.

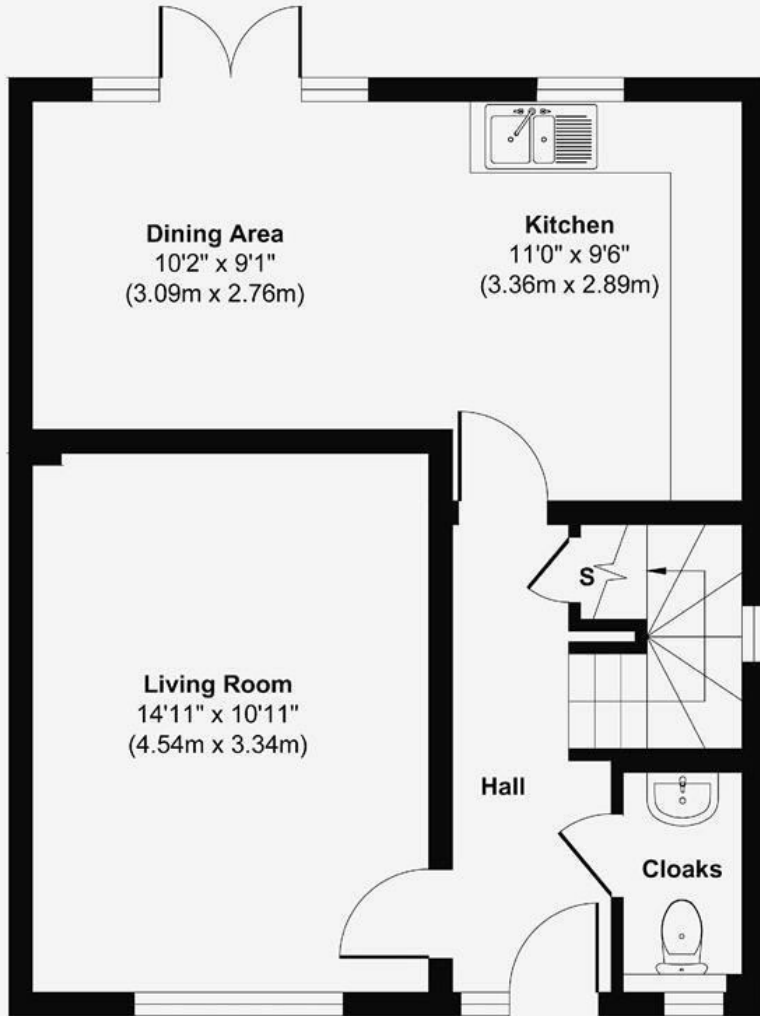
The property is close to local schools, bridleways, parks and Miller & Carter restaurant and bar, this represents a fantastic opportunity to purchase a family home close to amenities and within easy reach of both the City & Coast. Ideal location for commuting to Newcastle city centre, the various office parks at Gosforth, Cobalt and Quorum along with easy access to key transport routes.



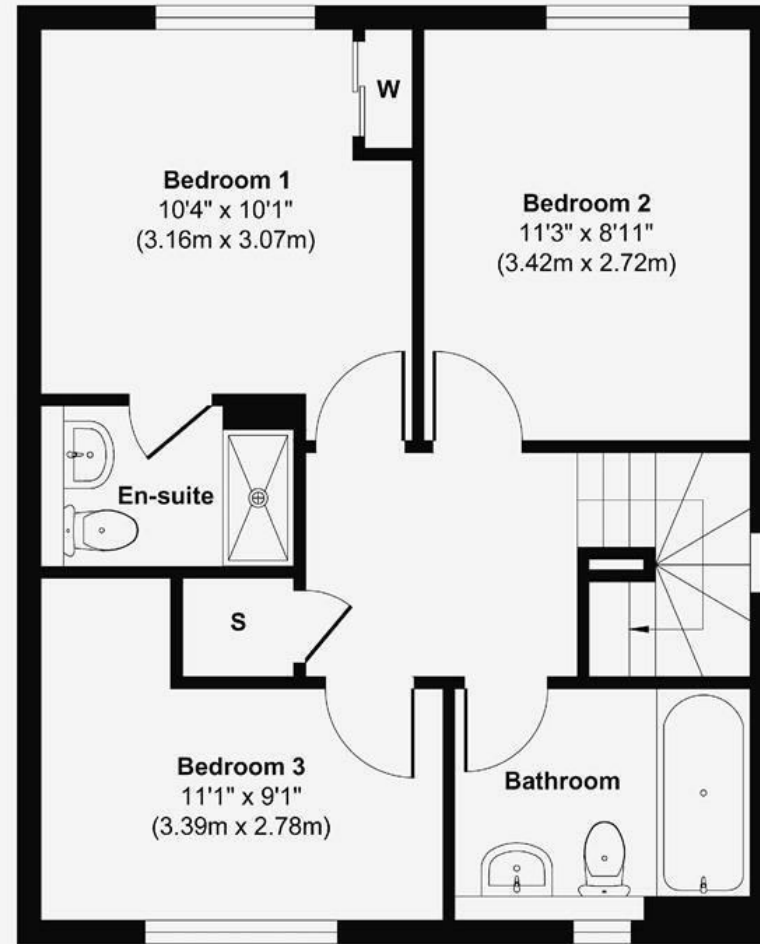








Ground Floor
 Approximate Floor Area
 482 sq. ft
 (44.85 sq. m)



First Floor
 Approximate Floor Area
 482 sq. ft
 (44.85 sq. m)

Approx. Gross Internal Floor Area 964 sq. ft / 89.70 sq. m