



# Alexander Hudson Estates

---

Sales Particulars

Northfield Drive

West Moor

NE12 7EE





Alexander Hudson Estates are pleased to introduce to market this well loved, semi-detached four bedroom family home with integral garage, driveway and spacious rear garden. Situated in a sought-after area, this property represents a fantastic opportunity to acquire a family home within catchment of Ofsted outstanding schools. Close-by to local shops, restaurants, and transport links.

Well presented and maintained throughout, the property comprises of an entrance hallway, living/ dining room, spacious kitchen and sunny conservatory extension. On the first floor lies a family bathroom and four generously sized bedrooms. Externally, a paved driveway and attached garage sit at the front providing off street parking and access to the integral garage. Whilst the spacious rear garden features a paved patio area, lawn and mature planted borders.

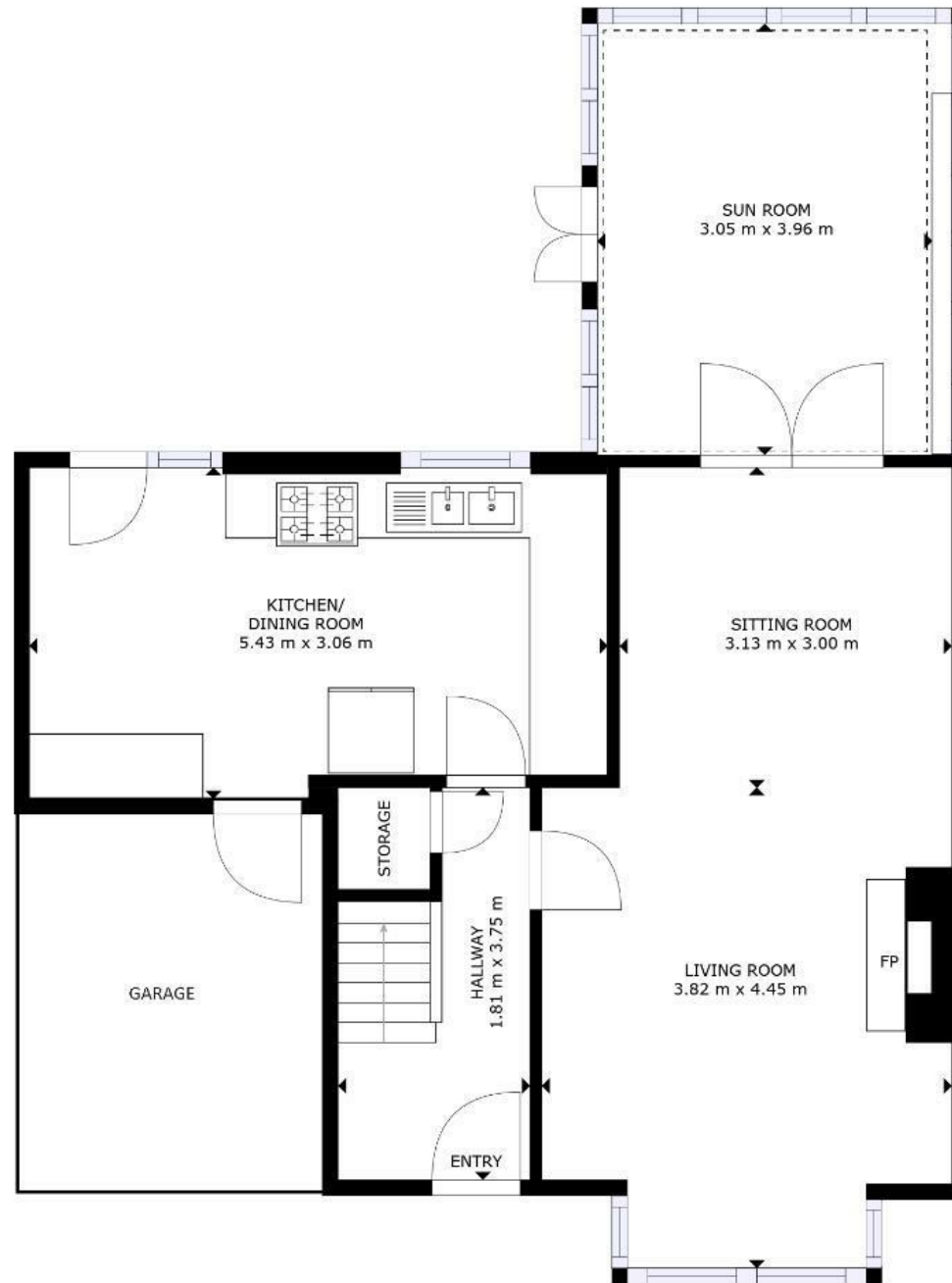
The property is close to Gosforth, Balliol, and Quorum Business Parks, with the A1 and A19 easily accessible for those commuting further afield. West Moor is also adjacent to Killingworth, home to The Killingworth Centre (anchored by a large Morrison's supermarket), and the White Swan Centre, which includes a Doctors' surgery, activity hall, café and Killingworth Library. The Lakeside Centre offers up various leisure facilities including a swimming pool and soft play for children.











GROSS INTERNAL AREA  
FLOOR 1: 64 m<sup>2</sup>, FLOOR 2: 57 m<sup>2</sup>  
TOTAL: 121 m<sup>2</sup>

SIZES AND DIMENSIONS ARE APPROXIMATE, ACTUAL MAY VARY.

FLOOR 1