



Malden Place

Kentish Town London NW5 4JL

£1,300,000

SOLD

An exceptional, recently refurbished, three storey, modern terraced house, ideally situated in a quiet residential side turning, with very little through traffic, within a short walking distance of the Heath.

Offering spacious and immaculately presented living space, conveniently arranged over three storeys, the property provides ideal, flexible accommodation.

In particular, all bedrooms are good doubles and the provision of three recently refitted bathrooms makes the house ideally suited to growing families. The reception is a good size and the recently refitted eat-in kitchen is complete with a range of premium appliances.

Malden Place is a tranquil residential location on the Kentish Town/Belsize Park Border, a short walk from the array of independent shops, bars and restaurants of South End Green and the rolling acres of Hampstead Heath.

With nearest Underground stations are at Belsize Park and Chalk Farm (Northern Line) and multiple bus routes along Malden Rd, the property is well situated for fast and easy access to the City & West End

- Recently refurbished modern terraced house
- Four good double bedrooms
- Three bathrooms, one ensuite
- Good sized reception
- Recently refitted eat-in kitchen
- Guest WC
- Rear garden
- Large roof terrace with far-reaching views
- Tranquil location, close to Heath
- Chain free sale

Viewing

Please contact our Kentish Town Sales Office on 0207 482 4488 if you wish to arrange a viewing appointment for this property or require further information.



4



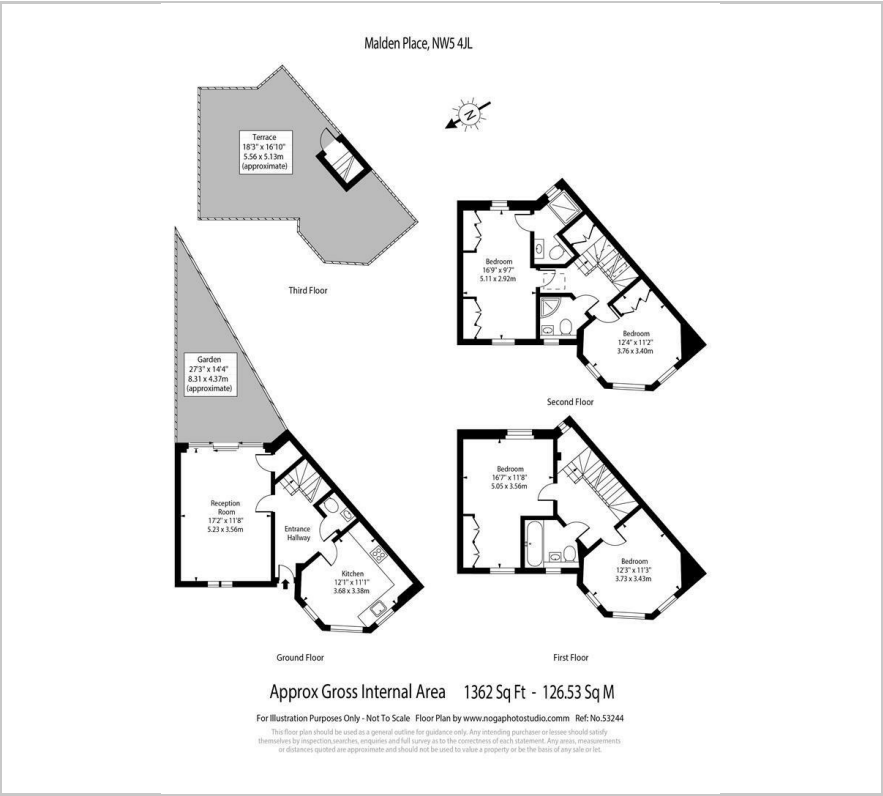
3



1



Floor Plan



Area Map



Energy Efficiency Graph



These particulars, whilst believed to be accurate are set out as a general outline only for guidance and do not constitute any part of an offer or contract. Intending purchasers should not rely on them as statements of representation of fact, but must satisfy themselves by inspection or otherwise as to their accuracy. No person in this firms employment has the authority to make or give any representation or warranty in respect of the property.