



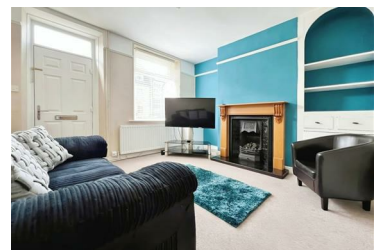
Wortley Road, High Green, Sheffield £700 Per Month

Council Tax: A

Tenure:



STEP INSIDE THIS WELL POSITIONED, SIZEABLE 2 BEDROOM MID TERRACE PROPERTY located in the perfect commuter location of High Green, walking distance from an array of amenities, on good bus routes, minutes away from the M1 with direct roads leading to Sheffield, Barnsley and Rotherham. The property boasts tasteful decor throughout, modern kitchen and bathroom, generous dimensions, large outdoor store and a well maintained sun drenched garden. Briefly comprising living room with charming fireplace, spacious dining area with large build in storage cupboard, light wood kitchen with integrated oven/hob, two good sized bedroom and on trend grey bathroom with separate shower cubicle to bath. Must be seen to truly appreciate the size and location. Book now to avoid disappointment!



- AVAIL AUG
- STYLISH DECOR
- CHARMING FEATURES
- LARGE GARDEN
- GOOD COMMUTER SPOT
- 2 BED MID TERRACE
- MODERN FIXTURES AND FITTINGS
- GENEROUS DIMENSIONS
- WALKING DISTANCE TO AMENITIES
- COUNCIL TAX BAND A